

ALLEGATO 2



INDIVIDUAZIONE DELLA RETE REGIONALE DI RILEVAMENTO DEI DATI IDRO-METEOROLOGICI

Consistenza attuale e configurazione di progetto

Rappresentazione grafica ed elenco delle relative stazioni

Dott.ssa Francesca Romana Pittaluga
Ing. Enzo Di Carlo
Dott. Geol. Fernando Manzella
Dott. Geol. Alessandro Santucci
Dott. Geol. Luca Pisani
Dott. Giancarmine Trotta

Pisa, settembre 2010



CENTRO FUNZIONALE
SERVIZIO IDROLOGICO REGIONALE

**RETE REGIONALE
DI RILEVAMENTO DEI DATI
IDRO-METEOROLOGICI
IN TELEMISURA**
- RETE ATTUALE -

LEGENDA

PROPRIETA'/GESTORE*

- SIR
- AdB SERCHIO/SIR
- ARSIA
- Reg EMR
- Reg LAZ
- Reg LIG
- Reg UMB

St. trad.

- ▲ SIR
- Idrografia

* Indicato solo nel caso in cui è diverso dal Proprietario





CENTRO FUNZIONALE
SERVIZIO IDROLOGICO REGIONALE

**RETE REGIONALE
DI RILEVAMENTO DEI DATI
IDRO-METEOROLOGICI
IN TELEMISURA**
- RETE ATTUALE -

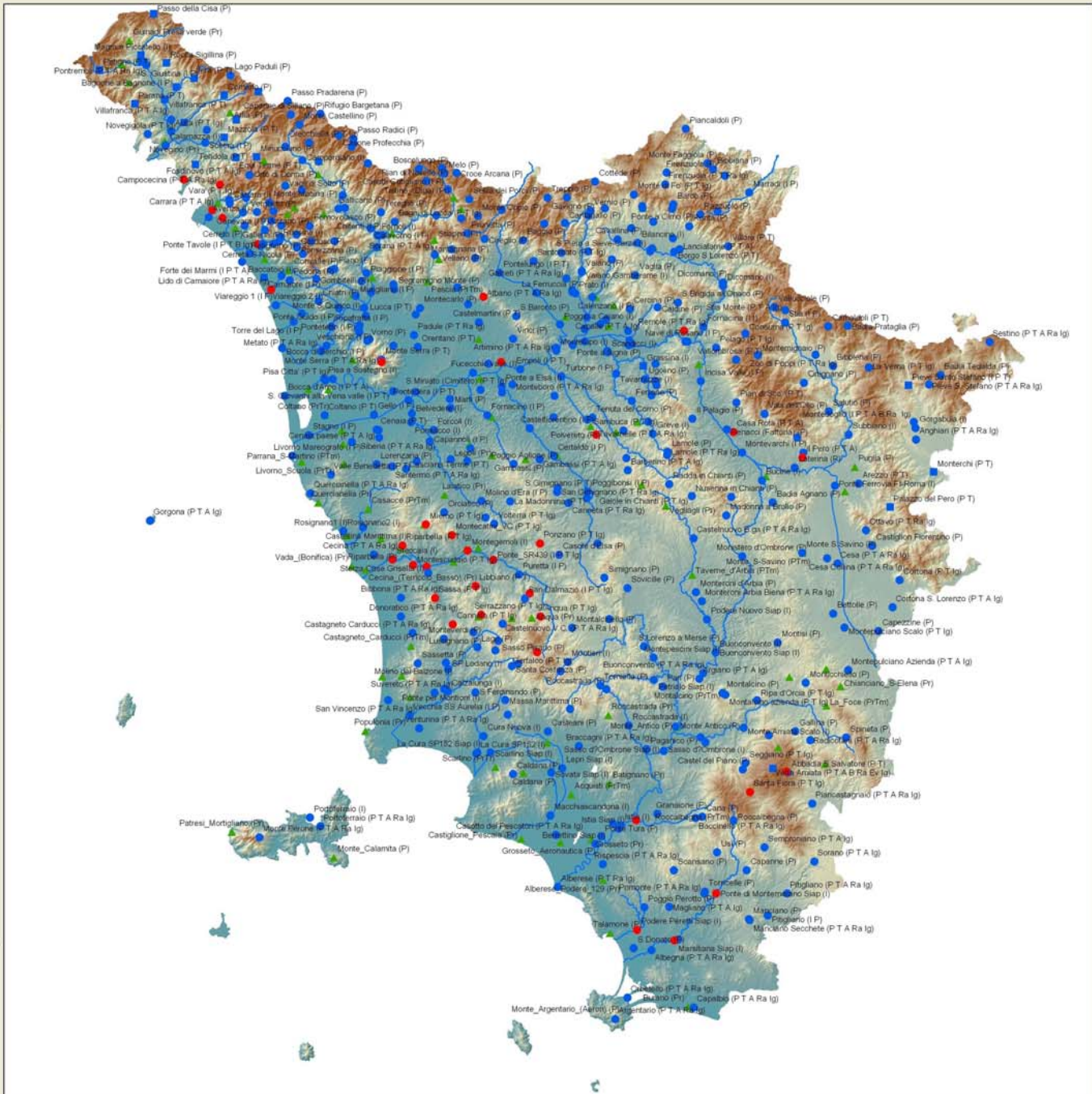
LEGENDA

- St. auto - Trasm. Radio + GPRS (35)
- St. auto - Trasm. Radio (429)
- St. auto - Trasm. GPRS (23)
- ▲ St. trad. - Memoria locale (112)

— Idrografia

Sensori installati su singola stazione

- P=Pluviometro
- I=Idrometro
- T=Termometro
- Ig=Igmometro
- A=Anemometro
- B=Barometro
- Ra=Radiometro
- Ev=Evaporimetro



LEGENDA DEI TERMINI UTILIZZATI NELLE TABELLE DI SEGUITO RIPORTATE

QUOTA	:	quota stazione slm (derivata da cartografia)	
ZONA ALLERTA	:	zona di allerta DGRT 611/2006	
TRASMISSIONE	:	tipo di trasmissione dati (stazioni automatiche)	
ATTIVAZIONE	:	data di attivazione della stazione	
PROPRIETA'	:	proprietà della stazione	
GESTORE	:	gestore della stazione	
SENSORI	:	sensori installati sulle stazioni di monitoraggio	→ A = anemometro B = barometro Ev = evaporimetro I = idrometro Ig = igrometro P = pluviometro Pr = pluviografo Ra = radiometro T = termometro Tr = termografo Tm = termometro max-min pH = ph dell'acqua T-H ₂ O = temperatura acqua Cond = conducibilità OD = ossigeno disciolto

RETE ATTUALE – Elenco delle Stazioni del Servizio Idrologico Regionale

ID STAZIONE	NOME	X_GB	Y_GB	QUOTA	ZONA ALLERTA	SENSORI	TRASMISSIONE	ATTIVAZIONE	PROPRIETA'	GESTORE
TOS09000015	Bagnone a Bagnone	1578367,0	4907424,0	320,0	A1	I P	GPRS	20/02/2008	SIR	SIR
TOS09001143	Comano	1589249,0	4905623,0	644,0	A1	P	GPRS	01/10/2008	SIR	SIR
TOS09001220	Equi Terme	1591971,0	4891331,0	250,0	A1	P T	GPRS	23/06/2006	SIR	SIR
TOS09001130	Iera	1582432,0	4909410,0	529,0	A1	P T	GPRS	23/06/2006	SIR	SIR
TOS09000021	Licciana Nardi - Ponterotto	1580147,0	4899277	180	A1	I P T	GPRS	01/01/2000	SIR	SIR
TOS09000001	Magra a Piccatello	1570312,0	4914739,0	292,0	A1	I	GPRS	28/04/2008	SIR	SIR
TOS09001200	Mazzola	1589246,0	4895965,0	460,0	A1	P T	GPRS	23/06/2006	SIR	SIR
TOS09001210	Minucciano	1596658,8	4891536,8	671,0	A1	P	GPRS	23/06/2006	SIR	SIR
TOS09001110	Parana	1568914,0	4903617,0	692,0	A1	P T	GPRS	23/06/2006	SIR	SIR
TOS09001160	Passo del cerreto	1597078,0	4906391,0	1250,0	A1	P T	GPRS	23/06/2006	SIR	SIR
TOS09001053	Passo della Cisa	1573212,1	4924178,6	1014,0	A1	P	GPRS	27/11/2008	SIR	SIR
TOS09001061	Patigno	1560872,0	4911373,0	744,0	A1	P T	GPRS	23/06/2006	SIR	SIR
TOS09001080	Pontremoli dep.	1570374,0	4913280,0	226,0	A1	P T	GPRS	23/06/2006	SIR	SIR
TOS09001088	Rocca Sigillina	1576119,0	4912900,0	435,0	A1	P	GPRS	01/01/2007	SIR	SIR
TOS09001230	Tendola	1582713,0	4889758,0	410,0	A1	P T	GPRS	23/06/2006	SIR	SIR
TOS09001180	Turano - Pieve S. Paolo	1592015,0	4899953,0	500,0	A1	P T	GPRS	23/06/2006	SIR	SIR
TOS09001120	Villafranca	1575703,3	4904614,7	118,0	A1	P T	GPRS	23/06/2006	SIR	SIR
TOS01004007	Avenza	1585723,0	4877785,0	10,0	A2	I	Radio	08/07/2004	SIR	SIR
TOS09001000	Baccatoio	1598366,0	4863989,0	0,0	A2	I	GPRS	01/07/2009	SIR	SIR
TOS01004005	Carrara	1590532,0	4880935,0	375,0	A2	I	Radio	08/07/2004	SIR	SIR
TOS01000056	Pian della Fioba	1596746,7	4878999,2	870,0	A2	P T Ig	Radio	01/01/2008	SIR	SIR
TOS01000025	Vara	1590400,0	4881819,0	431,0	A2	P T Ig	Radio	14/10/2003	SIR	SIR
TOS01004611	Bilancino	1683530,0	4871894,0	224,0	B1	I	Radio	18/06/1991	SIR	SIR
TOS01000999	Borgo S.Lorenzo	1691828,0	4869887,0	193,0	B1	P T	Radio	19/03/1991	SIR	SIR

ID STAZIONE	NOME	X_GB	Y_GB	QUOTA	ZONA ALLERTA	SENSORI	TRASMISSIONE	ATTIVAZIONE	PROPRIETA'	GESTORE
TOS01000911	Cavallina	1678958,0	4872707,0	275,0	B1	P	Radio	22/03/1991	SIR	SIR
TOS01001041	Consuma	1708073,0	4851212,0	950,0	B1	P T Ig	Radio	07/03/1991	SIR	SIR
TOS01001029	Dicomano	1702988,0	4862867,0	149,0	B1	P	Radio	19/04/2000	SIR	SIR
TOS01004625	Dicomano	1702980,0	4862076,0	142,0	B1	I	Radio	18/09/1991	SIR	SIR
TOS01004642	Fornacina	1698537,0	4852775,0	92,0	B1	II	Radio	14/03/1991	SIR	SIR
TOS01000926	Le Croci (Barberino)	1682069,0	4875275,0	385,0	B1	P T A B Ev Ig	Radio	29/11/1991	SIR	SIR
TOS01000921	Mangona	1676018,0	4879748,0	517,0	B1	P T Ig	Radio	28/11/1991	SIR	SIR
TOS01000925	Marcoiano	1684568,0	4880318,0	540,0	B1	P T Ig	Radio	22/05/1991	SIR	SIR
TOS01000916	Monte di Fo'	1682648,0	4882968,0	767,0	B1	P T Ig	Radio	22/05/1991	SIR	SIR
TOS01000931	Ponte a Olmo	1684658,0	4879843,0	448,0	B1	P	Radio	24/05/1991	SIR	SIR
TOS01000979	Razuolo	1697758,0	4878362,0	631,0	B1	P	Radio	20/03/1991	SIR	SIR
TOS01000991	Ronta	1695298,0	4875647,0	365,0	B1	P	Radio	20/03/1991	SIR	SIR
TOS01004621	S. Piero a Sieve-Sieve	1686800,0	4870661,0	199,0	B1	I P	Radio	24/05/1991	SIR	SIR
TOS01000961	S.Agata di Mugello	1687113,0	4876752,0	336,0	B1	P	Radio	19/03/1991	SIR	SIR
TOS01004623	S.Piero a Sieve-Carza	1686348,0	4869964,0	205,0	B1	I	Radio	05/09/2000	SIR	SIR
TOS01000941	Vaglia	1683018,0	4864542,0	292,0	B1	P	Radio	22/05/1991	SIR	SIR
TOS01001011	Villore	1704208,0	4871147,0	382,0	B1	P T	Radio	20/03/1991	SIR	SIR
TOS01001103	Caldine	1688087,0	4857216,0	461,0	B2	P	Radio	15/02/2000	SIR	SIR
TOS01004784	Calenzano	1673230,0	4859537,0	61,0	B2	I P	Radio	05/09/2000	SIR	SIR
TOS01001212	Capalle	1671944,0	4854905,0	41,0	B2	P T A Ig	Radio	08/05/1997	SIR	SIR
TOS01001225	Case Passerini	1675068,0	4853381,0	35,0	B2	P T A B Ra Ig	Radio	08/04/1992	SIR	SIR
TOS01001102	Cercina	1681737,0	4856878,0	345,0	B2	P	Radio	18/05/1999	SIR	SIR
TOS01001095	Firenze Genio Civile	1681677,0	4849668,0	50,0	B2	P	Radio	14/11/1991	SIR	SIR
TOS01004679	Firenze Uffizi	1681490,0	4848587,0	44,0	B2	III	Radio	19/06/1991	SIR	SIR

ID STAZIONE	NOME	X_GB	Y_GB	QUOTA	ZONA ALLERTA	SENSORI	TRASMISSIONE	ATTIVAZIONE	PROPRIETA'	GESTORE
TOS01001096	Firenze Universita'	1681350,0	4851820,0	87,0	B2	P T A Ra Ig	Radio	09/05/1997	SIR	SIR
TOS01001189	Le Croci Calenzano	1677648,0	4868132,0	420,0	B2	P	Radio	16/03/2000	SIR	SIR
TOS01004659	Nave di Rosano	1694862,0	4849357,0	79,0	B2	I P	Radio	22/12/1989	SIR	SIR
TOS01001059	S.Brigida all'Opaco	1692708,0	4858312,0	425,0	B2	P	Radio	02/02/2000	SIR	SIR
TOS01004791	S.Piero a Ponti	1671422,0	4852276,0	34,0	B2	I	Radio	10/04/1991	SIR	SIR
TOS01004795	Sesto Fiorentino	1676316,0	4854386,0	36,0	B2	I	Radio	10/05/1995	SIR	SIR
TOS01004702	Ponte alle Mosse	1679175,0	4850623,0	50	B2	I	Radio	08/03/2000	SIR	SIR
TOS01001263	Baggio	1657445,0	4872514,0	444,0	B3	P	Radio	13/03/1995	SIR	SIR
TOS01001151	Cantagallo	1666902,0	4876463,0	602,0	B3	P	Radio	22/12/1999	SIR	SIR
TOS01001249	Cireglio	1648662,0	4872863,0	606,0	B3	P	Radio	16/12/1999	SIR	SIR
TOS01001273	Fattoria Iavello	1666127,0	4869667,0	560,0	B3	P	Radio	15/03/2000	SIR	SIR
TOS01001161	Gavigno	1667407,0	4882273,0	859,0	B3	P	Radio	15/03/2000	SIR	SIR
TOS01001269	La Ferruccia	1660487,0	4860537,0	40,0	B3	P	Radio	02/02/2000	SIR	SIR
TOS01001253	Montagna na	1646447,0	4868507,0	359,0	B3	P	Radio	18/05/1999	SIR	SIR
TOS01004875	Poggio a Caiano	1665817,0	4853340,0	32,0	B3	I	Radio	06/02/1991	SIR	SIR
TOS01004837	Pontelungo	1652018,0	4865095,0	66,0	B3	I P T	Radio	28/08/1991	SIR	SIR
TOS01004782	Prato	1669285,0	4860414,0	55,0	B3	I	Radio	23/01/2001	SIR	SIR
TOS01001205	Prato Universita'	1668612,0	4861118,0	62,0	B3	P T A Ig	Radio	08/05/1997	SIR	SIR
TOS01001634	S.Baronto	1655841,0	4855207,0	430,0	B3	P	Radio	13/09/2000	SIR	SIR
TOS01001181	Vaiano	1670737,0	4865309,0	105,0	B3	P	Radio	05/09/2000	SIR	SIR
TOS01004779	Vaiano Gamberame	1670786,0	4865527,0	95,0	B3	I	Radio	09/04/1991	SIR	SIR
TOS01001171	Vernio	1672740,0	4879225,0	299,0	B3	P	Radio	19/07/1994	SIR	SIR
TOS01001629	Castelmartini	1647317,0	4853827,0	20,0	B4	P T	Radio	16/12/1999	SIR	SIR
TOS01005101	Cateratte monte	1632947,0	4837889,0	10,0	B4	I	Radio	02/08/2000	SIR	SIR
TOS01004941	Empoli	1656775,0	4843092,0	16,0	B4	I P T	Radio	22/09/2000	SIR	SIR

ID STAZIONE	NOME	X_GB	Y_GB	QUOTA	ZONA ALLERTA	SENSORI	TRASMISSIONE	ATTIVAZIONE	PROPRIETA'	GESTORE
TOS01001861	Montecarlo	1633887,0	4857052,0	143,0	B4	P	Radio	08/02/2000	SIR	SIR
TOS01001601	Montecatini Terme	1642422,0	4861757,0	137,0	B4	P	Radio	09/02/2000	SIR	SIR
TOS01001889	Orentano	1633377,0	4848182,0	22,0	B4	P T	Radio	22/12/1999	SIR	SIR
TOS01005191	S. Giovanni alla Vena valle	1627771,0	4838082,0	8,0	B4	I P T	Radio	27/02/1991	SIR	SIR
TOS01001849	Segromigno Monte	1628006,0	4861357,0	120,0	B4	P	Radio	08/02/2000	SIR	SIR
TOS01001561	Serra Pistoiese	1641092,0	4870488,0	803,0	B4	P	Radio	14/09/2000	SIR	SIR
TOS01001371	Vinci	1655087,0	4850017,0	80,0	B4	P	Radio	03/02/2000	SIR	SIR
TOS01005251	Bocca d'Arno	1603065,0	4837063,0	2,0	C1	I P T A	Radio	20/04/2000	SIR	SIR
TOS01005365	Castellina Marittima	1620876,0	4807012,0	44,0	C1	I	Radio	01/09/2004	SIR	SIR
TOS01001916	Cenaia	1624006,0	4829327,0	19,0	C1	P T	Radio	17/02/2000	SIR	SIR
TOS01001831	Coltano	1612166,0	4832602,0	3,0	C1	P T	Radio	21/12/1999	SIR	SIR
TOS01005262	Gello	1623371,0	4832768,0	5,0	C1	I P	Radio	06/09/2000	SIR	SIR
TOS01005981	Livorno Mareografo	1604806,0	4823346,0	0,0	C1	I P	Radio	09/06/2000	SIR	SIR
TOS01001921	Lorenzana	1623996,0	4821417,0	92,0	C1	P	Radio	07/06/2000	SIR	SIR
TOS01001801	Monte Serra	1625136,0	4845297,0	908,0	C1	P T	Radio	19/05/1999	SIR	SIR
TOS01000544	Pisa (Fac. Agraria)	1614006,0	4840887,0	4,0	C1	P T Ig	Radio	09/06/2000	SIR	SIR
TOS01005231	Pisa a Sostegno	1612074,0	4840937,0	2,0	C1	I	Radio	28/02/1991	SIR	SIR
TOS01005181	Pontedera	1631287,0	4836008,0	9,0	C1	I P T	Radio	28/07/1993	SIR	SIR
TOS01005345	Rosignano I-2	1616407,1	4806153,2	0,0	C1	I I	Radio	27/11/2003	SIR	SIR
TOS01005342	Stagno	1608559,0	4828048,0	1,0	C1	I P	Radio	07/09/2000	SIR	SIR
TOS01001961	Valle Benedetta	1613623,0	4819049,0	261,0	C1	P T	Radio	19/04/2000	SIR	SIR
TOS01002085	Anqua	1661389,8	4786686,8	442,0	C2	P T Ig	GPRS+Radio	01/04/2006	SIR	SIR
TOS01002171	Canneto	1641393,1	4784915,4	309,0	C2	P T Ig	GPRS+Radio	01/04/2006	SIR	SIR
TOS01002071	Gerfalco	1660592,3	4778577,7	741,0	C2	P T Ig	GPRS+Radio	01/04/2006	SIR	SIR
TOS01002	Libbiano	1646594,0	4793632,0	428,0	C2	P T	GPRS+Ra	24/04/2003	SIR	SIR

ID STAZIONE	NOME	X_GB	Y_GB	QUOTA	ZONA ALLERTA	SENSORI	TRASMISSIONE	ATTIVAZIONE	PROPRIETA'	GESTORE
161							dio			
TOS01002104	Montecastelli_P	1658845,2	4792010,0	454,0	C2	P T Ig	GPRS+Radio	01/04/2006	SIR	SIR
TOS01002131	Montecatini_VC	1641197,8	4805286,3	383,0	C2	P T Ig	GPRS+Radio	01/04/2006	SIR	SIR
TOS01005395	Montegemoli	1644708,5	4801749,4	57,0	C2	I	GPRS+Radio	01/04/2006	SIR	SIR
TOS01002201	Montescudaio	1632334,9	4798443,8	230,0	C2	P T Ig	GPRS+Radio	01/04/2006	SIR	SIR
TOS01005401	Ponte di Monterufoli	1635452,0	4798055,0	33,0	C2	I P T	GPRS+Radio	24/04/2003	SIR	SIR
TOS01005386	Ponte_SR439	1650650,1	4799622,9	80,0	C2	I P T Ig	GPRS+Radio	01/04/2006	SIR	SIR
TOS01002115	Ponzano	1661239,4	4803358,7	340,0	C2	P T Ig	GPRS+Radio	01/04/2006	SIR	SIR
TOS01005373	Puretta	1656490,0	4796273,0	159,0	C2	I P	Radio	19/09/2000	SIR	SIR
TOS01002231	Riparbella	1629853,0	4802898,8	239,0	C2	P T Ig	GPRS+Radio	01/04/2006	SIR	SIR
TOS01005377	San Dalmazio	1657810,4	4790819,1	247,0	C2	I P T Ig	Radio	01/04/2006	SIR	SIR
TOS01002181	Sassa	1637324,8	4790953,2	389,0	C2	P T Ig	GPRS+Radio	01/04/2006	SIR	SIR
TOS01002331	Serrazzano	1647842,5	4787119,3	505,0	C2	P T Ig	GPRS+Radio	01/04/2006	SIR	SIR
TOS01005415	Steccaia	1627643,8	4799733,5	10,0	C2	I	GPRS+Radio	01/04/2006	SIR	SIR
TOS01005403	Sterza Case Grisella	1635764,1	4796641,4	37,0	C2	I	Radio	01/04/2006	SIR	SIR
TOS01005372	Masso degli Specchi	1661738	4794081	127	C2	I	Radio	09/20/00	SIR	SIR
TOS01005485	Calzalonga	1640232,0	4769560,0	45,0	C3	I	Radio	17/04/1996	SIR	SIR
TOS01005573	Cura Nuova	1648373,0	4759443,0	40,0	C3	I	Radio	05/08/2004	SIR	SIR
TOS01005572	La Cura SP152	1646736,0	4755457,0	10,0	C3	I	Radio	19/10/2004	SIR	SIR
TOS03005571	La Cura SP152 Siap	1646976,0	4755688,0	11,0	C3	I	Radio	24/03/2002	SIR	SIR
TOS01002351	Lago	1646961,6	4779690,7	307,0	C3	P	Radio	04/04/2006	SIR	SIR
TOS01002361	Lustignano	1646088,1	4783128,5	364,0	C3	P	Radio	04/04/2006	SIR	SIR
TOS03002469	Massa Marittima	1653346,0	4767681,0	235,0	C3	P	Radio	01/01/2002	SIR	SIR
TOS01005465	Molino del Balzone	1639762,3	4776170,0	73,0	C3	I	Radio	04/04/2006	SIR	SIR
TOS01002	Monteroto	1651067,0	4778989,0	524,0	C3	P	Radio	17/04/1996	SIR	SIR

ID STAZIONE	NOME	X_GB	Y_GB	QUOTA	ZONA ALLERTA	SENSORI	TRASMISSIONE	ATTIVAZIONE	PROPRIETA'	GESTORE
371	ndo									
TOS01002376	Monteverdi	1639328,0	4781640,0	302,0	C3	P	Radio	13/07/1994	SIR	SIR
TOS01005471	Ponte per Montioni	1639405,0	4770160,0	47,0	C3	I	Radio	17/04/1996	SIR	SIR
TOS03002476	S.Ferdinando	1646517,0	4769383,0	271,0	C3	P	Radio	01/01/2002	SIR	SIR
TOS01002401	Santa Costanza	1654815,3	4775389,0	600,0	C3	P	Radio	04/04/2006	SIR	SIR
TOS01002381	Sassetta	1633384,5	4776003,7	343,0	C3	P	Radio	04/04/2006	SIR	SIR
TOS01002309	Sasso Pisano	1651721,6	4781177,3	470,0	C3	P	Radio	04/04/2006	SIR	SIR
TOS03005577	Scarolino Siap	1649980,0	4755691,0	10,0	C3	I	Radio	24/03/2002	SIR	SIR
TOS01005461	SP Lodano	1640303,2	4774655,2	68,0	C3	I	Radio	04/04/2006	SIR	SIR
TOS01005489	Vecchia SS Aurelia	1631534,7	4764194,2	7,0	C3	IP	Radio	04/04/2006	SIR	SIR
TOS01005441	Portoferrai	1608787,0	4740835,0	1,0	C4	I	Radio	28/05/2003	SIR	SIR
TOS01001391	Casole d'Elsa	1665622,0	4800786,0	416,0	D1	P	Radio	21/04/2000	SIR	SIR
TOS01004971	Castelfiorentino	1658971,0	4829611,0	48,0	D1	IP	Radio	12/03/1991	SIR	SIR
TOS01004967	Certaldo	1664392,0	4823338,0	61,0	D1	IP	Radio	22/01/2001	SIR	SIR
TOS01004965	Poggibonsi	1672180,0	4815208,0	95,0	D1	IP	Radio	20/07/1993	SIR	SIR
TOS01004981	Ponte a Elsa	1652567,0	4839147,0	47,0	D1	I	Radio	14/03/2000	SIR	SIR
TOS01001291	S.Donato in Poggio	1680947,0	4822816,0	400,0	D1	PT	Radio	13/09/2000	SIR	SIR
TOS01001419	S.Gimignano	1665137,0	4815106,0	306,0	D1	PT	Radio	23/02/2000	SIR	SIR
TOS01001379	Simignano	1675887,0	4795536,0	420,0	D1	P	Radio	24/02/2000	SIR	SIR
TOS01005161	Belvedere	1632032,0	4833011,0	15,0	D2	I	Radio	22/01/2001	SIR	SIR
TOS01005131	Capannoli	1636160,0	4826651,0	29,0	D2	IP	Radio	10/05/1989	SIR	SIR
TOS01001781	Casciana Terme	1630731,0	4820382,0	127,0	D2	PT	Radio	09/02/2000	SIR	SIR
TOS01005135	Forcoli	1637026,9	4829220,6	28,0	D2	I	Radio	15/04/2008	SIR	SIR
TOS01005005	Fornacino	1649231,0	4832594,0	46,0	D2	IP	Radio	31/08/1994	SIR	SIR
TOS01005001	Fucecchio valle	1645994,0	4842327,0	9,0	D2	I	Radio	29/08/1991	SIR	SIR
TOS01001751	Ghizzano di Peccioli	1644667,0	4822137,0	173,0	D2	PT	Radio	10/02/2000	SIR	SIR

ID STAZIONE	NOME	X_GB	Y_GB	QUOTA	ZONA ALLERTA	SENSORI	TRASMISSIONE	ATTIVAZIONE	PROPRIETA'	GESTORE
TOS01001679	La Madonnina	1654472,0	4813001,0	289,0	D2	P T	Radio	23/02/2000	SIR	SIR
TOS01001521	Marti	1640872,0	4834242,0	120,0	D2	P	Radio	15/03/2000	SIR	SIR
TOS01002011	Miemo	1635251,4	4807685,4	420,0	D2	P T Ig	GPRS+Radio	01/04/2006	SIR	SIR
TOS01005115	Molino d'Era	1647919,0	4813041,0	100,0	D2	I P	Radio	03/08/2000	SIR	SIR
TOS01001711	Orciatice	1639421,0	4810446,0	351,0	D2	P	Radio	17/02/2000	SIR	SIR
TOS01001445	Poggio Aglione	1655263,0	4821495,0	452,0	D2	P	Radio	20/07/1993	SIR	SIR
TOS01005151	Ponsacco	1631854,9	4831033,0	19,0	D2	I	Radio	15/04/2008	SIR	SIR
TOS01001491	S.Miniato (Cimitero)	1647687,0	4838447,0	119,0	D2	P T Ig	Radio	17/12/1999	SIR	SIR
TOS01001664	Volterra	1650831,0	4807812,0	443,0	D2	P T Ig	Radio	13/03/1995	SIR	SIR
TOS01005672	Buonconviento	1701258,0	4778496,0	140,0	D3	I	Radio	16/05/2006	SIR	SIR
TOS03005671	Buonconviento Siap	1701258,0	4778496,0	140,0	D3	I	Radio	24/03/2002	SIR	SIR
TOS01002779	Campiano	1665919,0	4774229,0	500,0	D3	P T Ig	Radio	03/08/2004	SIR	SIR
TOS03002613	Monistero d'Ombrone	1707371,0	4800451,0	216,0	D3	P	Radio	01/01/2002	SIR	SIR
TOS03002733	Montalcinello	1668560,0	4784092,0	381,0	D3	P	Radio	01/01/2002	SIR	SIR
TOS03002801	Monte Antico	1692236,0	4761564,0	75,0	D3	P	Radio	01/01/2002	SIR	SIR
TOS03005711	Montepescini Siap	1687139,0	4777312,0	173,0	D3	I	Radio	24/03/2002	SIR	SIR
TOS03002689	Monteroni d'Arbia	1696788,0	4792261,0	234,0	D3	P	Radio	24/10/2000	SIR	SIR
TOS01005801	Montieri	1667564,0	4776338,0	365,0	D3	I	Radio	01/01/2004	SIR	SIR
TOS03002789	Pari	1689261,0	4770743,0	283,0	D3	P	Radio	01/01/2002	SIR	SIR
TOS03005725	Petriolo Siap	1687234	4772214,0	154,0	D3	I	Radio	24/03/2002	SIR	SIR
TOS03005655	Podere Nuovo Siap	1699288,0	4786046,0	146,0	D3	I	Radio	24/03/2002	SIR	SIR
TOS03002766	S.Lorenzo a Merse	1684939,0	4779885,0	195,0	D3	P	Radio	01/01/2002	SIR	SIR
TOS03002761	Sovicille	1681180,0	4793174,0	225,0	D3	P	Radio	01/01/2002	SIR	SIR
TOS03002781	Torniella	1674995,0	4770979,0	470,0	D3	P	Radio	01/01/2002	SIR	SIR
TOS01001	Antella	1687598,0	4844352,0	160,0	D4	P T	Radio	14/03/2000	SIR	SIR

ID STAZIONE	NOME	X_GB	Y_GB	QUOTA	ZONA ALLERTA	SENSORI	TRASMISSIONE	ATTIVAZIONE	PROPRIETA'	GESTORE
141										
TOS01001129	Ferrone	1682187,0	4835897,0	140,0	D4	P	Radio	21/09/2000	SIR	SIR
TOS19000704	Grassina	1684824,0	4843806,0	85,0	D4	I	GPRS	16/11/2007	SIR	SIR
TOS01004705	Greve	1686983,0	4828399,0	225,0	D4	I	Radio	21/09/1994	SIR	SIR
TOS01001115	Lamole	1690341,0	4824250,0	558,0	D4	P	Radio	19/07/1994	SIR	SIR
TOS01004901	Montelupo	1664940,0	4847342,0	28,0	D4	I	Radio	20/06/1991	SIR	SIR
TOS01004915	Montespertoli	1672089,0	4831583,0	183,0	D4	I P T Ig	Radio	21/02/2000	SIR	SIR
TOS01004811	Ponte a Signa	1668711,0	4848580,0	40,0	D4	I P	Radio	26/01/2001	SIR	SIR
TOS01001284	Radda in Chianti	1690686,0	4816875,0	582,0	D4	P	Radio	22/09/2000	SIR	SIR
TOS01001147	S.Colombano	1671503,0	4849460,0	33,0	D4	P T A B Ra Ig	Radio	07/04/1992	SIR	SIR
TOS01001215	S.Giusto	1676594,0	4847277,0	41,0	D4	P T A B Ra Ig	Radio	04/03/1992	SIR	SIR
TOS01004731	Scandicci	1676651,0	4846999,0	41,0	D4	I	Radio	25/01/2001	SIR	SIR
TOS01004725	Strada in Chianti	1686654,0	4837189,0	142,0	D4	I P	Radio	02/09/1994	SIR	SIR
TOS01004723	Tavarnuzze	1678629,0	4842147,0	70,0	D4	I	Radio	07/03/1995	SIR	SIR
TOS01001311	Tenuta del Corno	1673192,0	4832047,0	315,0	D4	P	Radio	03/02/2000	SIR	SIR
TOS01004921	Turbone	1666165,0	4841452,0	50,0	D4	I P	Radio	08/08/2000	SIR	SIR
TOS01001136	Ugolino	1685101,0	4840817,0	206,0	D4	P	Radio	02/02/2000	SIR	SIR
TOS01000621	Badia Prataglia	1731414,0	4853047,0	847,0	E1	P	Radio	28/03/1991	SIR	SIR
TOS01000626	Bibbiena	1728008,0	4843837,0	411,0	E1	P	Radio	07/03/1991	SIR	SIR
TOS01000611	Camaldoli	1726984,0	4852857,0	800,0	E1	P T	Radio	21/03/1991	SIR	SIR
TOS01000639	La Verna	1736239,0	4843507,0	1122,0	E1	P T Ig	Radio	06/03/1991	SIR	SIR
TOS01000591	Montemignai	1710918,0	4846357,0	765,0	E1	P	Radio	07/03/1991	SIR	SIR
TOS01000601	Ortignano	1721443,0	4840007,0	480,0	E1	P	Radio	06/03/1991	SIR	SIR
TOS01000651	Salutio	1727103,0	4833481,0	321,0	E1	P	Radio	07/03/1991	SIR	SIR
TOS01004379	Stia	1717111,0	4853769,0	451,0	E1	I P	Radio	28/03/1991	SIR	SIR
TOS01004411	Subbiano	1731587,0	4828203,0	256,0	E1	I	Radio	26/03/1991	SIR	SIR

ID STAZIONE	NOME	X_GB	Y_GB	QUOTA	ZONA ALLERTA	SENSORI	TRASMISSIONE	ATTIVAZIONE	PROPRIETA'	GESTORE
TOS01000571	Vallucciole	1714678,0	4857247,0	765,0	E1	P	Radio	20/03/1991	SIR	SIR
TOS01000771	Arezzo	1733933,0	4816991,0	264,0	E2	PT	Radio	05/03/1991	SIR	SIR
TOS01000721	Bettolle	1728073,0	4787375,0	281,0	E2	P	Radio	24/01/1991	SIR	SIR
TOS01000701	Capezzine	1738413,0	4783390,0	291,0	E2	P	Radio	12/02/1991	SIR	SIR
TOS01000761	Castiglion Fiorentino	1736978,0	4802836,0	317,0	E2	P	Radio	28/03/1991	SIR	SIR
TOS01000751	Cortona	1743244,0	4794990,0	413,0	E2	PT Ig	Radio	03/11/1991	SIR	SIR
TOS01000741	Monte S.Savino	1721068,0	4801196,0	320,0	E2	P	Radio	12/02/1991	SIR	SIR
TOS01004521	Ponte Ferrovia FI-Roma	1728495,0	4816533,0	232,0	E2	I	Radio	27/03/1991	SIR	SIR
TOS01000811	Badia Agnano	1714318,0	4812701,0	260,0	E3	P	Radio	05/03/1991	SIR	SIR
TOS01004568	Bucine	1711880,0	4817743,0	172,0	E3	I	Radio	23/09/1993	SIR	SIR
TOS01000891	Il Palagio	1696018,0	4831791,0	317,0	E3	P	Radio	13/02/1991	SIR	SIR
TOS01004591	Incisa Valle	1697930,0	4840381,0	108,0	E3	IP	Radio	18/04/2000	SIR	SIR
TOS01000799	Laterina	1719298,0	4820676,0	181,0	E3	P	Radio	25/01/1991	SIR	SIR
TOS03002643	Madonna a Brolio	1703708,0	4809758,0	415,0	E3	P	Radio	01/01/2002	SIR	SIR
TOS01004571	Monteverchi	1707344,0	4824092,0	134,0	E3	IP	Radio	05/12/1991	SIR	SIR
TOS01004661	Nave Rosano valle	1694423,0	4849471,0	72,0	E3	I	Radio	23/04/1991	SIR	SIR
TOS01000831	Nusenna in Chianti	1704833,0	4813976,0	556,0	E3	P	Radio	14/02/1991	SIR	SIR
TOS01000881	Pian di Sco'	1706068,0	4835527,0	382,0	E3	PT	Radio	23/01/1991	SIR	SIR
TOS01000869	Renacci (Fattoria)	1703833,0	4829396,0	209,0	E3	P	Radio	13/02/1991	SIR	SIR
TOS01000901	Vallombrosa	1705948,0	4845267,0	969,0	E3	PT	Radio	07/03/1991	SIR	SIR
TOS01000861	Villa dell'Olio	1712428,0	4832931,0	610,0	E3	P	Radio	13/02/1991	SIR	SIR
TOS19000701	Monterchi	1751019,0	4819680,0	302,0	E4	PT	GPRS	01/09/2009	SIR	SIR
TOS19000703	Palazzo del Pero	1741116,0	4811681,0	409,0	E4	PT	GPRS	01/05/2009	SIR	SIR
TOS19000702	Pieve Santo Stefano	1745280,0	4839419,0	431,0	E4	IP T	GPRS	01/05/2009	SIR	SIR
TOS03002	Castel del	1707493,0	4751819,0	615,0	F1	P	Radio	01/01/2002	SIR	SIR

ID STAZIONE	NOME	X_GB	Y_GB	QUOTA	ZONA ALLERTA	SENSORI	TRASMISSIONE	ATTIVAZIONE	PROPRIETA'	GESTORE
901	Piano									
TOS03002845	Gallina	1719476,0	4760530,0	410,0	F1	P	Radio	01/01/2002	SIR	SIR
TOS03002701	Montalcino	1702889,0	4769281,0	599,0	F1	P	Radio	01/01/2002	SIR	SIR
TOS01005761	Monte Amiata Scalo	1707691,5	4761357,8	170,0	F1	I	Radio	01/05/2005	SIR	SIR
TOS03002869	Monticchiello	1721839,0	4771569,0	463,0	F1	P	Radio	01/01/2002	SIR	SIR
TOS03002888	Montisi	1715434,0	4780783,0	365,0	F1	P	Radio	01/01/2002	SIR	SIR
TOS03005781	S. Angelo Cinigiano Siap	1697858,0	4759152,0	97,0	F1	I	Radio	24/03/2002	SIR	SIR
TOS03002819	Spineta	1731093,0	4759059,0	515,0	F1	P	Radio	01/01/2002	SIR	SIR
TOS03005841	Berrettino Siap	1673872,0	4734834,0	12,0	F2	I	Radio	24/03/2002	SIR	SIR
TOS03002551	Caldana	1655086,0	4750745,0	341,0	F2	P	Radio	31/12/1899	SIR	SIR
TOS03002949	Cana	1698267,0	4741049,0	484,0	F2	P	Radio	01/01/2002	SIR	SIR
TOS03002515	Casteani	1663025,0	4760497,0	59,0	F2	P	Radio	01/01/2002	SIR	SIR
TOS03005811	Castellina Siap	1683212,0	4740235,0	31,0	F2	I	GPRS+Radio	24/03/2002	SIR	SIR
TOS03002941	Granaione	1688019,0	4741688,0	106,0	F2	P	Radio	01/01/2002	SIR	SIR
TOS01005822	Istia	1679619,0	4739045,0	18,0	F2	I	Radio	14/07/2004	SIR	SIR
TOS03005821	Istia Siap	1679240,0	4738367,0	20,0	F2	I	Radio	24/03/2002	SIR	SIR
TOS03005611	Lepri Siap	1666354,0	4752099,0	15,0	F2	I	Radio	24/03/2002	SIR	SIR
TOS01005601	Macchiascandona	1663604,0	4741332,0	10,0	F2	I	Radio	13/07/2004	SIR	SIR
TOS03002921	Paganico	1685574,0	4756440,0	59,0	F2	P	Radio	30/04/2000	SIR	SIR
TOS03002961	Ponte Tura	1675193,0	4736566,0	13,0	F2	P	Radio	01/01/2002	SIR	SIR
TOS01005785	Roccastrada	1681494,0	4761845,0	113,0	F2	I	Radio	12/07/2004	SIR	SIR
TOS03002531	Roccastrada	1676376,0	4770089,0	372,0	F2	P	Radio	01/01/2002	SIR	SIR
TOS01005791	Sasso d'Ombrone	1689451,0	4756021,0	66,0	F2	I	Radio	20/09/2000	SIR	SIR
TOS03005792	Sasso d'Ombrone Siap	1689451,0	4756021,0	66,0	F2	I	Radio	24/03/2002	SIR	SIR
TOS03005	Sovata	1663814,0	4751103,0	11,0	F2	I	Radio	24/03/2002	SIR	SIR

ID STAZIONE	NOME	X_GB	Y_GB	QUOTA	ZONA ALLERTA	SENSORI	TRASMISSIONE	ATTIVAZIONE	PROPRIETA'	GESTORE
615	Siap									
TOS03003041	Capanne	1708352,0	4728859,0	362,0	F3	P	Radio	01/01/2002	SIR	SIR
TOS03003079	Manciano	1708887,0	4717654,0	325,0	F3	P	Radio	01/01/2002	SIR	SIR
TOS03003089	Marsiliana	1692742,0	4712991,0	22,0	F3	P	Radio	01/01/2002	SIR	SIR
TOS03005895	Marsiliana Siap	1691874,0	4712855,0	12,0	F3	I	GPRS+Radio	24/03/2002	SIR	SIR
TOS03005865	Podere Peretti Siap	1683369,0	4715246,0	10,0	F3	I	GPRS+Radio	24/03/2002	SIR	SIR
TOS03003011	Poggio Perotto	1685012,0	4720359,0	87,0	F3	P	Radio	01/01/2002	SIR	SIR
TOS03005881	Ponte di Montemerano Siap	1701433,0	4723557,0	96,0	F3	I	GPRS+Radio	24/03/2002	SIR	SIR
TOS03003019	Roccalbegna	1705372,0	4740210,0	521,0	F3	P	Radio	01/01/2000	SIR	SIR
TOS03003099	S.Donato	1682617,0	4711049,0	8,0	F3	P	Radio	01/01/2002	SIR	SIR
TOS03003071	Scansano	1691786,0	4728825,0	437,0	F3	P	Radio	01/01/2002	SIR	SIR
TOS03003063	Torricelle	1698872,0	4723951,0	170,0	F3	P	Radio	01/01/2002	SIR	SIR
TOS03003053	Usi	1701637,0	4732924,0	371,0	F3	P	Radio	01/01/2002	SIR	SIR

RETE ATTUALE – Elenco delle Stazioni afferenti il Bacino del Fiume Serchio

ID STAZIONE	NOME	X_GB	Y_GB	QUOTA	ZONA ALLERTA	SENSORI	TRASMISSIONE	ATTIVAZIONE	PROPRIETA	GESTORE
TOS0200083	Azzano	1598538,0	4874891,0	432,0	A2	P	Radio	29/02/1996	SIR	SIR
TOS02004059	Camaiore	1602321,0	4864443,0	39,0	A2	I P	Radio	29/08/1995	AdB SERCHIO	SIR
TOS02004011	Canevara	1593517,0	4878830,0	106,0	A2	I P	Radio	28/11/2001	AdB SERCHIO	SIR
TOS0200077	Cardoso	1605791,0	4873818,0	396,0	A2	P	Radio	20/07/1998	SIR	SIR
TOS0200085	Cerreta S.Nicola	1597507,0	4871225,0	144,0	A2	P	Radio	28/03/2001	SIR	SIR
TOS0200088	Cerreto	1593956,0	4875898,0	476,0	A2	P	Radio	20/07/1998	SIR	SIR
TOS0200081	Cervairole	1600000,0	4876919,0	1035,0	A2	P T Ig	Radio	28/02/1996	SIR	SIR
TOS02004055	Forte dei Marmi	1593367,0	4867613,0	0,0	A2	I P T A	Radio	28/03/2001	SIR	SIR
TOS0200078	Gallena	1600466,0	4871741,0	353,0	A2	P	Radio	28/03/2001	SIR	SIR
TOS02004085	Padule Massaciucoli	1606946,0	4855817,0	2,0	A2	I	Radio	01/12/1998	SIR	SIR
TOS02000106	Pedona	1604149,0	4863394,0	347,0	A2	P	Radio	04/11/1999	SIR	SIR
TOS0200075	Pomeziana	1605818,0	4870868,0	481,0	A2	P	Radio	29/02/1996	SIR	SIR
TOS02004045	Ponte Tavole	1595072,0	4869511,0	11,0	A2	I P T B Ig	Radio	12/03/1996	SIR	SIR
TOS0200079	Retignano	1602126,0	4873288,0	424,0	A2	P	Radio	29/02/1996	SIR	SIR
TOS02004017	Ruosina	1601788,0	4872335,0	227,0	A2	I	Radio	22/09/2004	SIR	SIR
TOS02004028	Seravezza 1	1598146,0	4871713,0	65,0	A2	I I	Radio	13/03/1996	SIR	SIR
TOS0200064	Terrinca	1602288,0	4875842,0	830,0	A2	P	Radio	27/03/2001	SIR	SIR
TOS02004081	Torre del Lago	1605084,0	4853913,0	2,0	A2	I P pH T-H ₂ O Cond OD	Radio	08/09/1995	AdB SERCHIO	SIR
TOS02000108	Vallelunga	1607246,0	4869376,0	712,0	A2	P T	Radio	17/09/1999	SIR	SIR
TOS0200047	Vergheto	1594287,0	4882190,0	411,0	A2	P	Radio	28/11/2001	AdB SERCHIO	SIR
TOS02004091	Viareggio 1	1601072,0	4857709,0	4,0	A2	I P pH T-H ₂ O Cond OD	Radio	22/02/1996	AdB SERCHIO	SIR
TOS02004101	Viareggio 2	1601071,0	4857708,0	4,0	A2	I pH T-H ₂ O Cond OD	Radio	22/02/1996	AdB SERCHIO	SIR
TOS02000228	Alpe S.Pellegrino	1618307,0	4893858,0	1477,0	A3	P	Radio	14/05/1996	AdB SERCHIO	SIR

ID STAZIONE	NOME	X_GB	Y_GB	QUOTA	ZONA ALLERTA	SENSORI	TRASMISSIONE	ATTIVAZIONE	PROPRIETA	GESTORE
TOS02004271	Borgo a Mozzano	1624071,0	4870943,0	142,0	A3	I P	Radio	27/09/1995	AdB SERCHIO	SIR
TOS02000351	Boscungo	1633559,0	4888779,0	1397,0	A3	P	Radio	25/10/1995	AdB SERCHIO	SIR
TOS02004195	Calavorno	1622652,0	4875203,0	113,0	A3	I P	Radio	13/03/1996	AdB SERCHIO	SIR
TOS02000241	Campagna	1600456,0	4879148,0	811,0	A3	P	Radio	14/06/1996	AdB SERCHIO	SIR
TOS02004115	Camporgiano	1607066,0	4890831,0	380,0	A3	I	Radio	20/10/1999	SIR	SIR
TOS02000161	Capanne di Sillano	1604445,0	4901184,0	1012,0	A3	P	Radio	04/06/1996	AdB SERCHIO	SIR
TOS02000221	Casone Profecchia	1615420,0	4896430,0	1340,0	A3	P	Radio	30/08/1995	AdB SERCHIO	SIR
TOS02004215	Casotti Cutigliano	1640216,0	4884102,0	633,0	A3	I P	Radio	27/09/1995	AdB SERCHIO	SIR
TOS02004255	Chifenti	1625321,0	4873693,0	111,0	A3	I P	Radio	26/09/1995	AdB SERCHIO	SIR
TOS02000372	Croce Arcana	1642203,0	4887880,0	1640,0	A3	P	Radio	13/06/1996	AdB SERCHIO	SIR
TOS02000332	Fabbriche Vallico	1614395,0	4872308,0	402,0	A3	P	Radio	10/01/1996	AdB SERCHIO	SIR
TOS02004203	Fornoli	1624202,0	4873638,0	100,0	A3	I	Radio	19/10/1999	SIR	SIR
TOS02000281	Fornovola sco	1608768,0	4875762,0	514,0	A3	P	Radio	05/06/1996	AdB SERCHIO	SIR
TOS02000299	Galliciano	1615246,0	4879699,0	186,0	A3	P	Radio	26/09/1995	AdB SERCHIO	SIR
TOS02000359	Melo	1639426,0	4887759,0	993,0	A3	P	Radio	15/05/1996	AdB SERCHIO	SIR
TOS02000171	Monte Castellino	1606454,7	4898862,2	877,0	A3	P	Radio	14/02/1996	AdB SERCHIO	SIR
TOS02000237	Monte Macina	1599558,0	4881110,0	1308,0	A3	P	Radio	21/08/1996	AdB SERCHIO	SIR
TOS02000275	Monte Romecchio	1622043,0	4890099,0	1618,0	A3	P	Radio	05/06/1996	AdB SERCHIO	SIR
TOS02000177	Orto di Donna	1595018,0	4887369,0	1450,0	A3	P	Radio	14/05/1996	AdB SERCHIO	SIR
TOS02000329	Palagnana	1609041,0	4872318,0	764,0	A3	P	Radio	14/06/1996	AdB SERCHIO	SIR

ID STAZIONE	NOME	X_GB	Y_GB	QUOTA	ZONA ALLERTA	SENSORI	TRASMISSIONE	ATTIVAZIONE	PROPRIETA	GESTORE
TOS02000155	Passo Pradarena	1603708,0	4904258,0	1564,0	A3	P	Radio	04/06/1996	AdB SERCHIO	SIR
TOS02000381	Pian di Novello	1635372,0	4885977,0	1142,0	A3	P	Radio	13/06/1996	AdB SERCHIO	SIR
TOS02004165	Ponte di Campia	1616282,0	4882772,0	186,0	A3	I P	Radio	26/09/1995	AdB SERCHIO	SIR
TOS02004231	Ponte di Lucchio	1637581,0	4878182,0	353,0	A3	I P	Radio	27/07/1995	AdB SERCHIO	SIR
TOS02000441	Prunetta	1644662,0	4874074,0	946,0	A3	P	Radio	16/05/1996	AdB SERCHIO	SIR
TOS02000431	S.Marcello Pistoiese	1643295,0	4877532,0	1024,0	A3	P	Radio	26/10/1995	AdB SERCHIO	SIR
TOS02000401	Selva dei Porci	1645159,0	4881864,0	798,0	A3	P	Radio	15/05/1996	AdB SERCHIO	SIR
TOS02000339	Tereglio	1625010,0	4878920,0	547,0	A3	P	Radio	27/07/1995	AdB SERCHIO	SIR
TOS02000191	Vagli di Sotto	1603169,0	4884930,0	602,0	A3	P	Radio	10/01/1996	AdB SERCHIO	SIR
TOS02000203	Villacolle mandina	1610792,0	4890455,0	521,0	A3	P	Radio	30/08/1995	AdB SERCHIO	SIR
TOS02000515	Chiatri	1610814,0	4858605,0	254,0	A4	P	Radio	11/07/1995	AdB SERCHIO	SIR
TOS02000483	Convalle	1613684,0	4865722,0	452,0	A4	P	Radio	13/07/1995	AdB SERCHIO	SIR
TOS02000498	Fiano	1614371,0	4865980,0	331,0	A4	P	Radio	12/07/1995	AdB SERCHIO	SIR
TOS02000494	Gombitelli	1610237,0	4863750,0	401,0	A4	P	Radio	12/07/1995	AdB SERCHIO	SIR
TOS02000512	Lucca	1621547,0	4855274,0	20,0	A4	P T	Radio	26/07/1995	AdB SERCHIO	SIR
TOS02004291	Monte S.Quirico	1621129,0	4857140,0	18,0	A4	I	Radio	21/10/1999	SIR	SIR
TOS02004286	Mutigliano	1619252,0	4859816,0	34,0	A4	I P	Radio	07/09/1995	AdB SERCHIO	SIR
TOS02004284	Piaggione	1621675,0	4865034,0	45,0	A4	I P	Radio	27/09/1995	AdB SERCHIO	SIR
TOS02004305	Ponte Guido	1615414,0	4857046,0	18,0	A4	I P	Radio	18/04/1996	AdB SERCHIO	SIR
TOS02004315	Pontetetto	1620103,0	4853164,0	11,0	A4	I P	Radio	18/04/1996	AdB SERCHI	SIR

ID STAZIONE	NOME	X_GB	Y_GB	QUOTA	ZONA ALLERTA	SENSORI	TRASMISSIONE	ATTIVAZIONE	PROPRIETA	GESTORE
									O	
TOS02004311	Ripafra	1613727,0	4852790,0	9,0	A4	IIP	Radio	26/07/1995	AdB SERCHIO	SIR
TOS02000519	Vorno	1621856,0	4849567,0	85,0	A4	P	Radio	11/07/1995	AdB SERCHIO	SIR
TOS02000421	Monte Oppio	1647114,0	4878048,0	820,0	B5	P	Radio	26/10/1995	AdB SERCHIO	SIR
TOS02004369	Bocca di Serchio	1602450,0	4847947,0	0,0	C1	IP	Radio	25/07/1995	AdB SERCHIO	SIR
TOS02004365	Vecchiano	1612577,0	4848474,0	0,0	C1	IP	Radio	13/06/1996	AdB SERCHIO	SIR
TOS01004335	Guappero cassa mezzo	1620001,0	4852023,0	13,0	A4	I	Radio	02/07/2004	AdB SERCHIO	SIR
TOS01004336	Guappero cassa monte	1620055,0	4851500,0	14,0	A4	I	Radio	02/07/2004	AdB SERCHIO	SIR
TOS01004337	Guappero cassa valle 1 - 2	1619880,0	4852546,0	14,0	A4	II	Radio	02/07/2004	AdB SERCHIO	SIR

RETE ATTUALE – Elenco delle Stazioni ARSIA

ID STAZIONE	NOME	X_GB	Y_GB	QUOTA	ZONA ALLERTA	SENSORI	TRASMISSIONE	ATTIVAZIONE	PROPRIETA	GESTORE
TOS11000104	Aulla	1577145,0	4897322,0	68,0	A1	PT Ig	Radio	07/07/1999	ARSIA	ARSIA
TOS11000098	Fivizzano	1585265,0	4897682,0	206,0	A1	PTA Ra Ig	Radio	19/07/2003	ARSIA	ARSIA
TOS11000030	Fosdinovo	1580062,0	4886367,0	254,0	A1	PTA Ig	GPRS+Radio	19/01/2021	ARSIA	ARSIA
TOS11000099	Noviglio	1571815,0	4896720,0	399,0	A1	PT Ig	Radio	02/07/1996	ARSIA	ARSIA
TOS11000101	Pontremoli	1571076,0	4913119,0	306,0	A1	PTA Ra Ig	Radio	20/07/2001	ARSIA	ARSIA
TOS11000100	Villafranca	1577137,0	4900073,0	140,0	A1	PTA Ig	Radio	02/07/1996	ARSIA	ARSIA
TOS11000029	Campoecina	1588279,0	4885216,0	838,0	A2	PTA Ra Ig	GPRS+Radio	20/07/2021	ARSIA	ARSIA
TOS11000027	Candia Scurtarola	1588863,0	4877598,0	123,0	A2	PTA Ra Ig	GPRS+Radio	19/07/1990	ARSIA	ARSIA
TOS11000028	Carrara	1586568,0	4879362,0	39,0	A2	PTA Ig	GPRS+Radio	19/01/2019	ARSIA	ARSIA
TOS11000011	Lido di Camaiore	1599980,0	4861266,0	1,0	A2	PTA Ra Ig	GPRS+Radio	19/05/1990	ARSIA	ARSIA
TOS11000102	Strettoia	1596919,0	4871614,0	66,0	A2	PTA Ig	GPRS+Radio	25/07/1996	ARSIA	ARSIA
TOS11000092	Bagni di Lucca	1628167,0	4876740,0	573,0	A3	PT Ig	Radio	19/07/1996	ARSIA	ARSIA
TOS11000048	Barga	1616787,0	4879900,0	219,0	A3	PTA Ra Ig	Radio	19/06/1993	ARSIA	ARSIA
TOS11000096	Careggine	1606959,0	4883899,0	1055,0	A3	PTA Ig	Radio	19/05/2005	ARSIA	ARSIA
TOS11000095	Cutigliano Melo	1638924,0	4888997,0	1172,0	A3	PT Ig	Radio	19/07/1996	ARSIA	ARSIA
TOS11000097	Orecchiella	1608596,0	4894790,0	1094,0	A3	PT Ig	Radio	19/05/2005	ARSIA	ARSIA
TOS11000106	Passo Radici	1618747,0	4894657,0	1618,0	A3	PTA Ra Ig	Radio	19/07/1998	ARSIA	ARSIA
TOS11000034	Piazza al Serchio	1603168,0	4893864,0	633,0	A3	PTA Ra Ig	Radio	31/12/1994	ARSIA	ARSIA
TOS11000049	Aquilea	1620541,0	4863202,0	102,0	A4	PT Ra Ig	Radio	19/06/1993	ARSIA	ARSIA
TOS110000512	Monte Pisano Nord	1622425,0	4849941,0	179,0	A4	PTA Ra Ig	Radio	04/06/2004	ARSIA	ARSIA
TOS11000109	Ponte a Moriano	1622768,0	4860622,0	33,0	A4	PTA Ig	Radio	19/09/1999	ARSIA	ARSIA
TOS11000017	Borgo S. Lorenzo	1691586,0	4872938,0	273,0	B1	PTA Ra Ig	Radio	23/12/1993	ARSIA	ARSIA
TOS11000108	Giogo	1691359,0	4879731,0	880,0	B1	PTA Ig	Radio	16/06/1998	ARSIA	ARSIA
TOS110000514	Lanciafame	1693082,0	4870479,0	214,0	B1	PTA	Radio	26/08/2007	ARSIA	ARSIA
TOS11000111	Firenze Citta'	1682204,0	4848808,0	48,0	B2	PTA Ig	Radio	25/07/2000	ARSIA	ARSIA
TOS11000	Remole	1694054,0	4851920,0	207,0	B2	PT Ra Ig	GPRS+Ra	08/10/1991	ARSIA	ARSIA

ID STAZIONE	NOME	X_GB	Y_GB	QUOTA	ZONA ALLERTA	SENSORI	TRASMISSIONE	ATTIVAZIONE	PROPRIETA	GESTORE
024							dio			
TOS11000076	Artimino	1664904,0	4848010,0	95,0	B3	P T A Ra Ig	Radio	01/09/1994	ARSIA	ARSIA
TOS18000501	Galceti	1667289,0	4863815,0	76,0	B3	P T A Ra Ig	Radio	07/05/1996	ARSIA	ARSIA
TOS11000510	Prato Citta'	1668650,0	4860670,0	60,0	B3	P T A Ra Ig	Radio	04/06/2004	ARSIA	ARSIA
TOS1100093	Santomato	1659783,0	4867760,0	119,0	B3	P T Ig	Radio	05/07/1996	ARSIA	ARSIA
TOS18000503	Vaiano acquedotto	1672238,0	4869995,0	300,0	B3	P T A Ra Ig	Radio	04/06/2004	ARSIA	ARSIA
TOS18000506	Vernio	1672271,6	4878222,3	350,0	B3	P T A Ra Ig	Radio	04/06/2004	ARSIA	ARSIA
TOS1100077	Albano	1648363,0	4859592,0	292,0	B4	P T A Ra Ig	GPRS+Radio	31/03/1995	ARSIA	ARSIA
TOS11000515	Cerreto Corliano	1649483,0	4844380,0	49,0	B4	P T A	Radio	26/08/2007	ARSIA	ARSIA
TOS1100071	Cerreto Guidi	1652427,0	4844778,0	53,0	B4	P T A Ra Ig	GPRS+Radio	07/12/1993	ARSIA	ARSIA
TOS11000509	Monsummano	1644883,0	4857895,0	17,0	B4	P T A Ra Ig	Radio	04/06/2004	ARSIA	ARSIA
TOS1100031	Montecarlo	1632902,0	4855569,0	72,0	B4	P T A Ra Ig	Radio	01/01/1990	ARSIA	ARSIA
TOS1100018	Padule	1632541,0	4850871,0	6,0	B4	P T Ra Ig	Radio	19/12/1991	ARSIA	ARSIA
TOS1100033	Pieve di Compito	1627847,0	4848488,0	78,0	B4	P T A Ra Ig	Radio	28/01/1993	ARSIA	ARSIA
TOS1100032	San Pietro a Marcigliano	1627853,0	4862487,0	226,0	B4	P T A Ra Ig	Radio	29/01/1993	ARSIA	ARSIA
TOS1100091	Sorana	1637279,0	4869228,0	414,0	B4	P T A Ig	Radio	17/05/1996	ARSIA	ARSIA
TOS1100094	Acquerino	1662259,0	4876271,0	897,0	B5	P T Ra Ig	Radio	29/07/1996	ARSIA	ARSIA
TOS1100081	Firenzuola	1689793,0	4885275,0	535,0	B5	P T Ra Ig	Radio	28/07/1995	ARSIA	ARSIA
TOS1100002	Cecina	1623337,0	4800836,0	58,0	C1	P T A Ra Ig	Radio	19/07/1989	ARSIA	ARSIA
TOS11000800	Cenaia paese	1624467,0	4829264,0	19,0	C1	P T A Ig	Radio	25/08/2007	ARSIA	ARSIA
TOS1100036	Collesalveti	1618360,0	4826506,0	19,0	C1	P T A Ra Ig	Radio	19/04/1988	ARSIA	ARSIA
TOS1100001	Metato	1611317,0	4847183,0	4,0	C1	P T A Ra Ig	Radio	19/08/2001	ARSIA	ARSIA
TOS1100020	Monte Serra	1625132,0	4844785,0	853,0	C1	P T A Ra Ig	GPRS+Radio	07/03/1998	ARSIA	ARSIA
TOS11000110	Pisa Citta'	1612293,0	4840565,0	3,0	C1	P T Ig	Radio	04/07/2000	ARSIA	ARSIA
TOS11000513	Quercianella	1608954,0	4814774,0	167,0	C1	P T A Ra Ig	Radio	04/06/2004	ARSIA	ARSIA
TOS1100010	Santeramo	1627481,0	4820930,0	185,0	C1	P T A Ra Ig	Radio	30/05/1990	ARSIA	ARSIA
TOS11000	Siberia	1624562,0	4827496,0	30,0	C1	P T A Ra	Radio	18/05/1989	ARSIA	ARSIA

ID STAZIONE	NOME	X_GB	Y_GB	QUOTA	ZONA ALLERTA	SENSORI	TRASMISSIONE	ATTIVAZIONE	PROPRIETA	GESTORE
063						Ig				
TOS11000009	Bibbona	1629537,0	4790992,0	66,0	C3	P T A Ra Ig	Radio	21/06/1988	ARSIA	ARSIA
TOS11000069	Castagneto Carducci	1632213,0	4782925,0	113,0	C3	P T A Ra Ig	Radio	30/05/1988	ARSIA	ARSIA
TOS11000056	Castellnuovo V.C.	1652723,0	4785032,0	741,0	C3	P T A Ra Ig	Radio	23/11/1993	ARSIA	ARSIA
TOS11000003	Donoratico	1629546,0	4786705,0	36,0	C3	P T A Ra Ig	Radio	01/08/1989	ARSIA	ARSIA
TOS11000050	Massa Marittima Filetto	1656312,0	4775896,0	618,0	C3	P T Ig	Radio	20/09/2002	ARSIA	ARSIA
TOS11000041	Massa Marittima Valpiana	1653943,0	4764274,0	291,0	C3	P T A Ra Ig	Radio	19/02/1993	ARSIA	ARSIA
TOS11000035	San Vincenzo	1626644,0	4767636,0	12,0	C3	P T A Ra Ig	Radio	16/11/1989	ARSIA	ARSIA
TOS11000070	Suvereto	1637209,0	4769306,0	34,0	C3	P T A Ra Ig	Radio	31/12/1994	ARSIA	ARSIA
TOS11000004	Venturina	1633692,0	4761216,0	8,0	C3	P T A Ra Ig	Radio	01/08/1989	ARSIA	ARSIA
TOS11000107	Gorgona	1572363,0	4808561,0	180,0	C4	P T A Ig	Radio	24/04/1998	ARSIA	ARSIA
TOS11000511	Monte Perone	1597339,0	4736303,0	687,0	C4	P T A Ra Ig	Radio	20/06/2003	ARSIA	ARSIA
TOS11000012	Portoferrai	1611175,0	4738850,0	14,0	C4	P T A Ra Ig	Radio	01/04/1989	ARSIA	ARSIA
TOS11000022	Barberino	1681245,0	4820046,0	455,0	D1	P T A Ig	Radio	19/07/1992	ARSIA	ARSIA
TOS11000065	Canneta	1667741,0	4812616,0	152,0	D1	P T Ra Ig	Radio	01/12/1993	ARSIA	ARSIA
TOS11000074	Gambassi	1661189,0	4822540,0	122,0	D1	P T A Ig	Radio	16/12/1993	ARSIA	ARSIA
TOS11000504	Monteboro	1654977,1	4839616,5	76,0	D1	P T A Ra Ig	Radio	18/02/1998	ARSIA	ARSIA
TOS11000090	Montespertoli Lungagnana	1664388,0	4832169,0	160,0	D1	P T Ig	Radio	05/07/1996	ARSIA	ARSIA
TOS11000066	Poggibonsi Montemorli	1671977,0	4813687,0	199,0	D1	P T A Ra Ig	Radio	30/11/1993	ARSIA	ARSIA
TOS11000072	San Gimignano	1665293,0	4816008,0	217,0	D1	P T Ra Ig	Radio	10/12/1993	ARSIA	ARSIA
TOS11000045	San Miniato Poggio al Pino	1652577,0	4837839,0	123,0	D1	P T A Ra Ig	Radio	05/03/1993	ARSIA	ARSIA
TOS11000025	Scorgiano	1674393,0	4803320,0	215,0	D1	P T A Ra Ig	Radio	28/11/1992	ARSIA	ARSIA
TOS11000507	Legoli	1645419,0	4825097,0	190,0	D2	P T A Ra Ig	Radio	04/06/2004	ARSIA	ARSIA
TOS11000	Montopoli	1640688,0	4836282,0	27,0	D2	P T A Ig	Radio	05/03/1993	ARSIA	ARSIA

ID STAZIONE	NOME	X_GB	Y_GB	QUOTA	ZONA ALLERTA	SENSORI	TRASMISSIONE	ATTIVAZIONE	PROPRIETA	GESTORE
046										
TOS11000068	Peccioli	1640937,0	4822556,0	113,0	D2	P T A Ra Ig	Radio	16/11/1996	ARSIA	ARSIA
TOS11000016	Terricciola	1633198,0	4822125,0	89,0	D2	P T Ra Ig	Radio	29/04/1992	ARSIA	ARSIA
TOS11000047	Volterra Balze	1648842,0	4809311,0	273,0	D2	P T A Ra Ig	Radio	25/02/1993	ARSIA	ARSIA
TOS11000019	Castelnuovo B.ga	1696273,0	4804546,0	280,0	D3	P T A Ra Ig	Radio	18/12/1991	ARSIA	ARSIA
TOS11000087	Gaiole in Chianti	1695856,0	4814180,0	350,0	D3	P T Ig	Radio	09/07/1996	ARSIA	ARSIA
TOS11000082	Monteroni Arbia Biena	1698186,0	4790208,0	183,0	D3	P T A Ra Ig	Radio	03/01/1991	ARSIA	ARSIA
TOS11000080	Pentolina	1677028,0	4786096,0	431,0	D3	P T A Ra Ig	Radio	05/05/1995	ARSIA	ARSIA
TOS11000075	Bagno a Ripoli	1687841,0	4839480,0	240,0	D4	P T A Ra Ig	Radio	17/12/1993	ARSIA	ARSIA
TOS180000505	Casa Sartori	1664547,6	4837055,9	197,0	D4	P T A Ra Ig	Radio	20/09/2007	ARSIA	ARSIA
TOS11000073	Greve in Chianti	1685888,0	4831161,0	233,0	D4	P T A Ra Ig	Radio	14/12/1993	ARSIA	ARSIA
TOS11000023	Lamole	1690245,0	4823531,0	505,0	D4	P T Ra Ig	Radio	19/07/1992	ARSIA	ARSIA
TOS11000088	Poggio Casciano	1687553,0	4840384,0	192,0	D4	P T A Ig	Radio	10/05/1996	ARSIA	ARSIA
TOS11000057	Sambuca	1680259,0	4829134,0	308,0	D4	P T Ig	Radio	23/01/2001	ARSIA	ARSIA
TOS11000021	Tavarnelle	1674053,0	4828163,0	355,0	D4	P T A Ra Ig	GPRS+Radio	30/07/1992	ARSIA	ARSIA
TOS110000105	Stia Monte	1717215,0	4856552,0	801,0	E1	P T A Ig	Radio	21/07/1998	ARSIA	ARSIA
TOS180000502	Zoo di Poppi	1724085,6	4846403,1	419,0	E1	P T Ra Ig	Radio	28/05/1999	ARSIA	ARSIA
TOS11000037	Cesa	1729089,0	4798772,0	247,0	E2	P T A Ra Ig	Radio	01/01/1974	ARSIA	ARSIA
TOS110000112	Cesa Collina	1726742,0	4799953,0	268,0	E2	P T A Ra Ig	Radio	20/07/2002	ARSIA	ARSIA
TOS11000084	Cortona S. Lorenzo	1741618,0	4788790,0	260,0	E2	P T A Ig	Radio	07/05/1996	ARSIA	ARSIA
TOS110000113	Montepulciano Azienda	1731548,0	4774463,0	320,0	E2	P T A Ig	Radio	25/11/2004	ARSIA	ARSIA
TOS11000085	Montepulciano Scalo	1730696,0	4784199,0	250,0	E2	P T Ig	Radio	07/05/1996	ARSIA	ARSIA
TOS11000038	Ottavo	1735553,0	4806368,0	409,0	E2	P T Ra Ig	Radio	11/02/1993	ARSIA	ARSIA
TOS110000516	Casa Rota	1705377,0	4828801,0	178,0	E3	P T A	GPRS+Radio	26/08/2007	ARSIA	ARSIA
TOS11000083	Castiglion Fibocchi	1721321,0	4824112,0	299,0	E3	P T Ig	Radio	07/05/1996	ARSIA	ARSIA
TOS110000517	Il Pero	1721108,0	4822964,0	276,0	E3	P T A	GPRS+Radio	26/08/2007	ARSIA	ARSIA
TOS110000	Pelago	1701390,0	4847974,0	345,0	E3	P T Ig	Radio	08/07/1996	ARSIA	ARSIA

ID STAZIONE	NOME	X_GB	Y_GB	QUOTA	ZONA ALLERTA	SENSORI	TRASMISSIONE	ATTIVAZIONE	PROPRIETA	GESTORE
089										
TOS11000078	Pratomagno	1719936,0	4827489,0	654,0	E3	P T A Ra Ig	Radio	05/04/1995	ARSIA	ARSIA
TOS11000039	Anghiari	1746974,0	4827083,0	327,0	E4	P T A Ra Ig	Radio	17/02/1993	ARSIA	ARSIA
TOS11000040	Pieve S. Stefano	1749938,0	4839585,0	744,0	E4	P T A Ra Ig	Radio	17/02/1993	ARSIA	ARSIA
TOS11000026	Sestino	1763769,0	4849306,0	1000,0	E4	P T A Ra Ig	Radio	20/09/2002	ARSIA	ARSIA
TOS11000062	Argiano	1697608,0	4772517,0	338,0	F1	P T A Ig	Radio	18/05/1989	ARSIA	ARSIA
TOS11000067	Buonconvento	1698438,0	4773716,0	190,0	F1	P T A Ra Ig	Radio	02/12/1993	ARSIA	ARSIA
TOS11000058	Castiglion d'Orcia	1713453,0	4759606,0	646,0	F1	P T A Ra Ig	Radio	24/11/1993	ARSIA	ARSIA
TOS11000086	Montalcino azienda	1703527,0	4768880,0	487,0	F1	P T Ig	Radio	08/05/1996	ARSIA	ARSIA
TOS11000051	Montenero	1698947,0	4758038,0	172,0	F1	P T A Ra Ig	Radio	01/01/1994	ARSIA	ARSIA
TOS11000061	Radicondoli	1722913,0	4758517,0	577,0	F1	P T A Ra Ig	Radio	26/11/1993	ARSIA	ARSIA
TOS11000059	Ripa d'Orcia	1710714,0	4767612,0	510,0	F1	P T Ig	Radio	01/07/1995	ARSIA	ARSIA
TOS11000053	Seggiano	1708117,0	4753269,0	511,0	F1	P T Ig	Radio	18/11/1993	ARSIA	ARSIA
TOS11000115	Vetta Amiata	1714373,8	4752044,5	1667,0	F1	P T A B Ra Ev Ig	GPRS	01/01/1996	ARSIA	ARSIA
TOS11000103	Alberese	1665256,0	4724973,0	1,0	F2	P T Ra Ig	Radio	10/12/1996	ARSIA	ARSIA
TOS11000054	Baccinello	1696705,0	4740742,0	384,0	F2	P T A Ra Ig	Radio	22/11/1993	ARSIA	ARSIA
TOS11000008	Braccagni	1670120,0	4757160,0	54,0	F2	P T A Ra Ig	Radio	24/05/1990	ARSIA	ARSIA
TOS11000013	Casotto dei Pescatori	1664882,0	4736912,0	1,0	F2	P T A Ra Ig	Radio	01/10/1990	ARSIA	ARSIA
TOS11000005	Risposcia	1675586,0	4730186,0	25,0	F2	P T A Ra Ig	Radio	28/07/1989	ARSIA	ARSIA
TOS11000015	Roccatereghini	1668152,0	4765635,0	406,0	F2	P T Ra Ig	Radio	17/01/1992	ARSIA	ARSIA
TOS11000042	Stiacciole	1677900,0	4739483,0	51,0	F2	P T Ra Ig	Radio	19/02/1993	ARSIA	ARSIA
TOS11000007	Albegna	1686676,0	4710584,0	8,0	F3	P T A Ra Ig	Radio	26/06/1989	ARSIA	ARSIA
TOS11000079	Argentario	1678444,0	4694880,0	483,0	F3	P T A Ra Ig	Radio	02/04/1995	ARSIA	ARSIA
TOS11000006	Capalbio	1696347,0	4697523,0	11,0	F3	P T A Ra Ig	Radio	20/06/1989	ARSIA	ARSIA
TOS11000044	Magliano	1690699,0	4720528,0	139,0	F3	P T A Ig	Radio	17/03/1993	ARSIA	ARSIA
TOS11000058	Orbetello	1681190,0	4699780,0	0,0	F3	P T A Ra Ig	Radio	22/06/1999	ARSIA	ARSIA
TOS11000043	Pomonte	1698698,0	4723516,0	129,0	F3	P T A Ra Ig	Radio	10/04/1993	ARSIA	ARSIA

ID STAZIONE	NOME	X_GB	Y_GB	QUOTA	ZONA ALLERTA	SENSORI	TRASMISSIONE	ATTIVAZIONE	PROPRIETA	GESTORE
TOS11000114	Abbadia S. Salvatore	1717377,8	4751334,7	910,0	F4	P T A B Ra Ig	GPRS+Radio	01/01/1996	ARSIA	ARSIA
TOS11000064	Manciano Secchete	1709108,0	4717475,0	309,0	F4	P T A Ra Ig	Radio	01/01/1995	ARSIA	ARSIA
TOS11000060	Piancastagnaio	1723317,0	4744046,0	334,0	F4	P T A Ra Ig	Radio	27/12/1993	ARSIA	ARSIA
TOS11000014	Pitigliano	1717577,0	4723530,0	237,0	F4	P T A Ra Ig	Radio	06/12/1991	ARSIA	ARSIA
TOS11000052	Santa Fiora	1709130,0	4746690,0	829,0	F4	P T Ig	GPRS+Radio	31/12/1994	ARSIA	ARSIA
TOS11000055	Semproniano	1712474,0	4734045,0	448,0	F4	P T A Ig	Radio	19/11/1993	ARSIA	ARSIA

RETE ATTUALE – Elenco delle Stazioni di proprietà delle regioni limitrofe

ID STAZIONE	NOME	X_GB	Y_GB	QUOTA	ZONA ALLERTA	SENSORI	TRASMISSIONE	ATTIVAZIONE	PROPRIETA	GESTORE
TOS39001246	Calamazza	1575937,0	4894201,0	46,0	A1	I	Radio	01/01/2000	REG LIG	REG LIG
TOS30209600	Lago Paduli	1590706,8	4910100,5	1168,0	A1	P	Radio	01/10/2004	REG EMR	REG EMR
TOS39001083	S. Giustina	1571466,0	4912470,0	199,0	A1	I P	Radio	01/01/2007	REG LIG	REG LIG
TOS39001223	Soliera	1584926,0	4894732,0	132,0	A1	I P	Radio	01/01/2007	REG LIG	REG LIG
TOS30355400	Passo Radici	1618713,0	4895648,0	1642,0	A3	P	Radio	01/10/2004	REG EMR	REG EMR
TOS30338600	Rifugio Bargetana	1611176,0	4901342,4	1992,0	A3	P	Radio	01/10/2004	REG EMR	REG EMR
TOS30287500	Barco	1691634,9	4880688,8	780,0	B5	P	Radio	01/10/2004	REG EMR	REG EMR
TOS30248000	Bibbiana	1700663,6	4888739,7	791,0	B5	P	Radio	01/10/2004	REG EMR	REG EMR
TOS30248400	Casaglia	1701759,9	4879082,1	745,0	B5	P	Radio	01/10/2004	REG EMR	REG EMR
TOS30290100	Cottede	1673821,8	4885882,9	771,0	B5	P	Radio	01/10/2004	REG EMR	REG EMR
TOS30290300	Firenzuola	1690102,7	4887944,6	430,0	B5	P	Radio	01/10/2004	REG EMR	REG EMR
TOS30250000	Marradi	1708962,7	4883383,0	321,0	B5	I P	Radio	01/10/2004	REG EMR	REG EMR
TOS30287700	Monte Faggiola	1699422,5	4890054,7	887,0	B5	P	Radio	01/10/2004	REG EMR	REG EMR
TOS30290400	Palazuolo sul Senio	1703473,8	4887213,9	487,0	B5	P	Radio	01/10/2004	REG EMR	REG EMR
TOS30290200	Piancaldoli	1694452,7	4897910,5	668,0	B5	P	Radio	01/10/2004	REG EMR	REG EMR
TOS30150800	Pracchia	1652509,0	4879428,0	637,0	B5	I P T	Radio	01/10/2004	REG EMR	REG EMR
TOS30290700	Treppio	1662966,8	4882234,1	721,0	B5	P	Radio	01/10/2004	REG EMR	REG EMR
TOS30233300	Badia Tedalda	1752599,3	4841769,4	850,0	E4	P	Radio	01/10/2004	REG EMR	REG EMR
TOS06006028	Gorgabuia	1746841,2	4829710,8	335,0	E4	I	Radio	01/01/2000	REG UMB	REG UMB
TOS06006078	Montedoglio	1746482,0	4831109,0	398,0	E4	I P T A B Ra Ig	Radio	30/06/2008	REG UMB	REG UMB
TOS07000001	Abbadia S.Salvatore	1717732,0	4751148,0	874,0	F4	P T	Radio	01/01/2000	REG LAZ	REG LAZ
TOS07000046	Pitigliano	1713149,0	4718550,0	156,0	F4	I P	Radio	01/01/2000	REG LAZ	REG LAZ
TOS07000072	Sorano	1723819,0	4730837,0	448,0	F4	P T A Ig	Radio	01/09/2007	REG LAZ	REG LAZ

RETE ATTUALE – Elenco delle Stazioni tradizionali del Servizio Idrologico Regionale

ID STAZIONE	NOME	X_GB	Y_GB	QUOTA	ZONA ALLERTA	SENSORI	ATTIVAZIONE	PROPRIETA	GESTORE
TOS10000115	Camaiore_I_Frati	1603805,0	4865652,0	31,0	A2	Pr	01/01/1989	SIR	SIR
TOS10000040	Carrara	1587786,0	4881018,0	112,0	A2	PrTm	01/01/1921	SIR	SIR
TOS10000062	Massa	1591746,0	4875268,0	65,0	A2	Pr	01/01/1923	SIR	SIR
TOS10000090	Pietrasanta	1598441,0	4868233,0	22,0	A2	PrTm	01/01/1924	SIR	SIR
TOS10000470	Bagni_di_Lucca	1627472,0	4874153,0	146,0	A3	PrTr	01/01/1955	SIR	SIR
TOS10000480	Borgo_a_Mozzano	1624356,0	4870933,0	100,0	A3	PrTm	01/01/1921	SIR	SIR
TOS10000350	Boscungo	1633562,0	4888968,0	1340,0	A3	PrTr	01/01/1920	SIR	SIR
TOS10000180	Gramolazzo	1598376,0	4890593,0	614,0	A3	PTm	01/01/1954	SIR	SIR
TOS10000250	Isola_Santa	1605286,0	4879983,0	585,0	A3	Pr	01/01/1952	SIR	SIR
TOS10000290	Polla_dei_Gangheri	1611911,0	4878518,0	300,0	A3	P	01/01/1967	SIR	SIR
TOS10000210	Pontecosi	1610686,0	4887508,0	334,0	A3	PrTm	01/01/1922	SIR	SIR
TOS10000245	Puntato	1603671,0	4878457,0	957,0	A3	PrTr	01/01/1994	SIR	SIR
TOS10000430	S-Marcello_Pistoiese	1643282,0	4879583,0	625,0	A3	PrTm	01/01/1921	SIR	SIR
TOS10000400	Selva_dei_Porci	1645212,0	4882048,0	750,0	A3	PrTm	01/01/1948	SIR	SIR
TOS10000408	Tistino_(Diga)	1641547,0	4882186,0	550,0	A3	Pr	01/01/1994	SIR	SIR
TOS10000190	Vagli_di_Sotto_(Diga)	1603386,0	4885278,0	562,0	A3	PTm	01/01/1954	SIR	SIR
TOS10000200	Villacollemandina	1610906,0	4890568,0	500,0	A3	PrTm	01/01/1938	SIR	SIR
TOS10000511	Lucca_(Orto_Botanico)	1621606,0	4855447,0	20,0	A4	PrTr	01/01/1990	SIR	SIR
TOS10000500	Mutigliano	1618566,0	4860072,0	62,0	A4	PrTm	01/01/1933	SIR	SIR
TOS10000490	Vinchiana	1622986,0	4863963,0	46,0	A4	Pr	01/01/1965	SIR	SIR
TOS10000930	Ponte_a_Olmo	1684658,0	4879843,0	444,0	B1	Pr	01/01/1957	SIR	SIR
TOS10000950	S-Piero_a_Sieve	1687123,0	4870982,0	211,0	B1	P	01/01/1934	SIR	SIR
TOS100009	Vaglia	1683018,0	4864542,0	315,0	B1	PTm	01/01/1939	SIR	SIR

ID STAZIONE	NOME	X_GB	Y_GB	QUOTA	ZONA ALLERTA	SENSORI	ATTIVAZIONE	PROPRIETA	GESTORE
40									
TOS10001200	Calenzano	1673917,0	4859537,0	67,0	B2	Pr	01/01/1964	SIR	SIR
TOS10001224	Firenze_Peretola	1676868,0	4852966,0	34,0	B2	P	01/01/1981	SIR	SIR
TOS10001220	Sesto_Fiorentino	1678038,0	4857557,0	55,0	B2	Pr	01/01/1929	SIR	SIR
TOS10001281	La_Rugea_II	1667090,0	4855059,0	33,0	B3	PrTr	01/01/1995	SIR	SIR
TOS10001276	Olmi	1667277,0	4864062,0	110,0	B3	Pr	01/01/1980	SIR	SIR
TOS10001210	Prato_Galcieti	1667224,0	4863892,0	90,0	B3	Pr	01/01/1978	SIR	SIR
TOS10001600	Montecatini_Terne	1642422,0	4861757,0	60,0	B4	PrTm	01/01/1938	SIR	SIR
TOS10001580	Pescia	1635592,0	4863132,0	62,0	B4	PrTm	01/01/1921	SIR	SIR
TOS10001650	Stabbia	1647277,0	4849967,0	38,0	B4	PTm	01/01/1926	SIR	SIR
TOS10001550	Stiappa	1637157,0	4872548,0	627,0	B4	Pr	01/01/1926	SIR	SIR
TOS10001570	Vellano	1638137,0	4868178,0	420,0	B4	Pr	01/01/1921	SIR	SIR
TOS10000530	Asciano_Pisano	1618586,0	4845247,0	50,0	C1	Pr	01/01/1951	SIR	SIR
TOS10001990	Casacce	1622046,0	4811206,0	50,0	C1	PrTm	01/01/1949	SIR	SIR
TOS10002060	Cecina_(Terriccio_Basso)	1621471,0	4797316,0	6,0	C1	Pr	01/01/1979	SIR	SIR
TOS10001830	Coltano	1612166,0	4832602,0	1,0	C1	PrTr	01/01/1923	SIR	SIR
TOS10001959	Livorno_Scuola	1606889,0	4822002,0	3,0	C1	PrTr	01/01/1995	SIR	SIR
TOS10001950	Mortaiolo	1615976,0	4829082,0	8,0	C1	P	01/01/1935	SIR	SIR
TOS10001940	Nugola	1616316,0	4825932,0	69,0	C1	PrTr	01/01/1934	SIR	SIR
TOS10001930	Parrana_S-Martino	1616516,0	4821477,0	131,0	C1	PTm	01/01/1948	SIR	SIR
TOS10000560	Pisa_S-Giusto	1612963,0	4838488,0	3,0	C1	P	01/01/1977	SIR	SIR
TOS10001970	Quercianella	1610656,0	4812637,0	20,0	C1	Pr	01/01/1921	SIR	SIR
TOS10002030	Quercioletta	1617216,0	4805136,0	17,0	C1	Pr	01/01/1974	SIR	SIR
TOS10000550	S-Rossore	1608396,0	4838547,0	4,0	C1	PrTm	01/01/1933	SIR	SIR
TOS100020	Terriccio	1624921,0	4804479,0	153,0	C1	P	01/01/1934	SIR	SIR

ID STAZIONE	NOME	X_GB	Y_GB	QUOTA	ZONA ALLERTA	SENSORI	ATTIVAZIONE	PROPRIETA	GESTORE
40									
TOS10002050	Vada_(Bonifica)	1618271,0	4798201,0	1,0	C1	Pr	01/01/1930	SIR	SIR
TOS10002080	Anqua	1659327,0	4786396,0	495,0	C2	Pr	01/01/1934	SIR	SIR
TOS10002140	Cacciatina	1644357,0	4802151,0	65,0	C2	P	01/01/1939	SIR	SIR
TOS10002100	Castelnuovo_V-Cecina	1654757,0	4786326,0	535,0	C2	Pr	01/01/1921	SIR	SIR
TOS10002150	Ponteginori	1641526,0	4799180,0	66,0	C2	PrTm	01/01/1938	SIR	SIR
TOS10002230	Riparbella	1629466,0	4802341,0	216,0	C2	P	01/01/1921	SIR	SIR
TOS10002120	Saline_di_Volterra	1647097,0	4802336,0	72,0	C2	PTm	01/01/1934	SIR	SIR
TOS10002330	Serrazzano_Paese	1647152,0	4786671,0	528,0	C2	Pr	01/01/1975	SIR	SIR
TOS10002420	Campiglia_Marittima	1631606,0	4768325,0	190,0	C3	Pr	01/01/1980	SIR	SIR
TOS10002270	Castagneto_Carducci	1631816,0	4779981,0	194,0	C3	PrTm	01/01/1921	SIR	SIR
TOS10002300	Populonia	1621451,0	4760615,0	170,0	C3	Pr	01/01/1951	SIR	SIR
TOS10002290	S-Carlo_Solvay	1629646,0	4773166,0	350,0	C3	Pr	01/01/1938	SIR	SIR
TOS10002282	S-Vincenzo	1625246,0	4773016,0	2,0	C3	Pr	01/01/1934	SIR	SIR
TOS10002510	Scarlino	1651096,0	4752355,0	229,0	C3	PrTr	01/01/1921	SIR	SIR
TOS10002430	Venturina	1631146,0	4764525,0	7,0	C3	PrTm	01/01/1923	SIR	SIR
TOS10003240	Monte_Calamita	1614252,0	4731708,0	413,0	C4	P	01/01/1989	SIR	SIR
TOS10003200	Patresi_Mortigliano	1590945,0	4737565,0	120,0	C4	Pr	01/01/1955	SIR	SIR
TOS10001430	Certaldo	1665112,0	4823476,0	70,0	D1	Pr	01/01/1921	SIR	SIR
TOS10001440	Gambassi	1657962,0	4822566,0	332,0	D1	P	01/01/1921	SIR	SIR
TOS10001740	Castelfalfi	1650272,0	4823397,0	272,0	D2	PrTr	01/01/1965	SIR	SIR
TOS10002010	Castelnuovo_Misericordia	1634786,0	4807636,0	160,0	D2	P	01/01/1949	SIR	SIR
TOS10001500	Fattoria_Scaletta	1647542,0	4841017,0	20,0	D2	PrTr	01/01/1961	SIR	SIR
TOS10001720	Laiatico	1639426,0	4814456,0	205,0	D2	Pr	01/01/1953	SIR	SIR

ID STAZIONE	NOME	X_GB	Y_GB	QUOTA	ZONA ALLERTA	SENSORI	ATTIVAZIONE	PROPRIETA	GESTORE
TOS10001760	Legoli	1645127,0	4825977,0	230,0	D2	Pr	01/01/1948	SIR	SIR
TOS10001510	S-Giovanni_Corazzano	1650252,0	4832192,0	150,0	D2	Pr	01/01/1921	SIR	SIR
TOS10002800	Monte_Antico	1692357,0	4761440,0	76,0	D3	P	01/01/1921	SIR	SIR
TOS10002680	Taverne_d'Arbia	1695963,0	4796241,0	230,0	D3	PTm	01/01/1934	SIR	SIR
TOS10002640	Vagliagli	1689902,0	4811948,0	511,0	D3	Pr	01/01/1976	SIR	SIR
TOS10001285	Castellina_in_Chianti	1684367,0	4816756,0	590,0	D4	Pr	01/01/1986	SIR	SIR
TOS10001335	Polvereto	1672739,8	4830089,8	320	D4	Pr	31/01/2007	SIR	SIR
TOS10001300	S-Andrea_in_Fabbrica	1678572,0	4828762,0	292,0	D4	PrTr	01/01/1957	SIR	SIR
TOS10001125	Testi	1683455,0	4831117,0	308,0	D4	Pr	01/10/2001	SIR	SIR
TOS10000620	Badia_Prata	1731424,0	4853057,0	843,0	E1	PTm	01/01/1921	SIR	SIR
TOS10000780	Arezzo_Aeronautica	1730753,0	4815200,0	250,0	E2	P	01/01/1981	SIR	SIR
TOS10000681	Chianciano_S-Elena	1729755,0	4770781,0	512,0	E2	Pr	01/01/1983	SIR	SIR
TOS10000740	Monte_S-Savino	1721078,0	4801206,0	330,0	E2	PTm	01/01/1921	SIR	SIR
TOS10000690	Montepulciano	1726468,0	4774765,0	607,0	E2	PrTm	01/01/1925	SIR	SIR
TOS10000790	Puglia	1732963,0	4820766,0	302,0	E2	P	01/01/1952	SIR	SIR
TOS10000820	Fattoria_Migliarina	1712728,0	4818641,0	256,0	E3	PTm	01/01/1974	SIR	SIR
TOS10000905	Rignano	1697358,0	4844207,0	177,0	E3	PrTr	01/01/1980	SIR	SIR
TOS10000900	Vallombrosa	1705948,0	4845267,0	955,0	E3	PrTr	01/01/1921	SIR	SIR
TOS10002860	La_Foce	1726533,0	4766330,0	555,0	F1	PrTm	01/01/1936	SIR	SIR
TOS10002700	Montalcino	1703263,0	4769680,0	564,0	F1	PrTm	01/01/1921	SIR	SIR
TOS10002880	Pienza_(Maddonnina)	1718073,0	4772900,0	499,0	F1	PrTr	01/01/1953	SIR	SIR
TOS10002910	Vivo_d'Orcia	1715578,0	4756815,0	800,0	F1	Pr	01/01/1921	SIR	SIR
TOS10002580	Acquisti	1668312,0	4746055,0	11,0	F2	PrTm	01/01/1935	SIR	SIR
TOS10002970	Alberese_Podere_129	1675557,0	4726584,0	20,0	F2	Pr	01/01/1937	SIR	SIR

ID STAZIONE	NOME	X_GB	Y_GB	QUOTA	ZONA ALLERTA	SENSORI	ATTIVAZIONE	PROPRIETA	GESTORE
TOS10002570	Batignano	1676987,0	4748555,0	163,0	F2	Pr	01/01/1927	SIR	SIR
TOS10002550	Caldana	1657422,0	4751045,0	179,0	F2	P	01/01/1934	SIR	SIR
TOS10002520	Castel_di_Pietra	1662897,0	4757985,0	56,0	F2	PrTr	01/01/1934	SIR	SIR
TOS10002585	Castiglione_Pescaia	1656974,0	4735972,0	0,0	F2	Pr	01/01/1997	SIR	SIR
TOS10002590	Grosseto	1672937,0	4735870,0	8,0	F2	Pr	01/01/1921	SIR	SIR
TOS10002600	Grosseto_Aeronautica	1665863,0	4735255,0	3,0	F2	P	01/01/1980	SIR	SIR
TOS10002530	Roccastrada	1676747,0	4764190,0	470,0	F2	Pr	01/01/1921	SIR	SIR
TOS10003000	Talamone	1677187,0	4714509,0	1,0	F2	P	01/01/1951	SIR	SIR
TOS10003124	Burano	1695097,0	4697754,0	6,0	F3	Pr	01/01/1934	SIR	SIR
TOS10003120	Monte_Argentario_(Aeron)	1678493,0	4695132,0	580,0	F3	P	01/01/1980	SIR	SIR
TOS10003020	Roccalbegna	1705372,0	4740210,0	525,0	F3	PrTm	01/01/1921	SIR	SIR
TOS10002810	Radicofani Teleposto	1726214,8	4753066,9	760,0	F4	P	30/12/1999	SIR	SIR
106020	Guinadi Presa Verde	1567610	4918024	371	A1	Pr	'01/01/1957	SIR	SIR
107020	Presa Gordana	1565867	4912620	368	A1	Pr	'01/01/1957	SIR	SIR
-	Pontremoli Verdeno	1569800	4913989	250	A1	Pr	'01/01/1920	SIR	SIR
110020	Rocchetta	1567585	4908528	426	A1	Pr	'01/01/1935	SIR	SIR
124020	Novegino	1575671	4895230	55	A1	Pr	'01/01/1938	SIR	SIR
118020	Pieve S. Paolo	1592015	4899953	836	A1	Pr	'01/01/1933	SIR	SIR

REGIONE
TOSCANA



CENTRO FUNZIONALE
SERVIZIO IDROLOGICO REGIONALE

RETE REGIONALE DI RILEVAMENTO DEI DATI IDRO-METEOROLOGICI IN TELEMISURA

- RETE DI PROGETTO -

LEGENDA

PROPRIETA'/GESTORE*

- SIR
- AdB SERCHIO/SIR
- ARSIA
- Reg EMR
- Reg LAZ
- Reg LIG
- Reg UMB

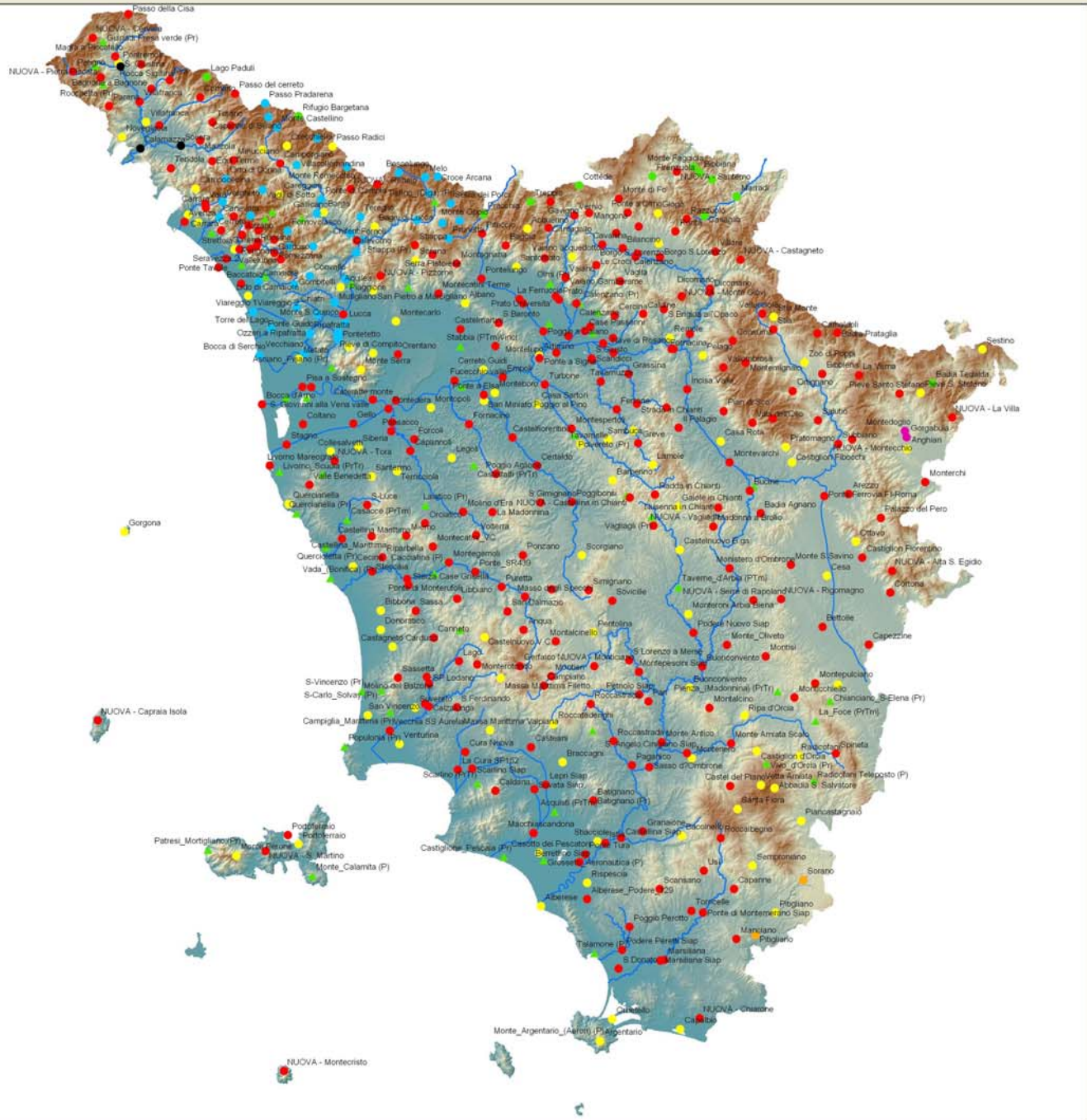
St. trad.

- ▲ SIR
- Idrografia

* Indicato solo nel caso in
cui è diverso dal Proprietario



0 20 40 80 Km





CENTRO FUNZIONALE
SERVIZIO IDROLOGICO REGIONALE

RETE REGIONALE DI RILEVAMENTO DEI DATI IDRO-METEOROLOGICI IN TELEMISURA

- RETE DI PROGETTO -

LEGENDA

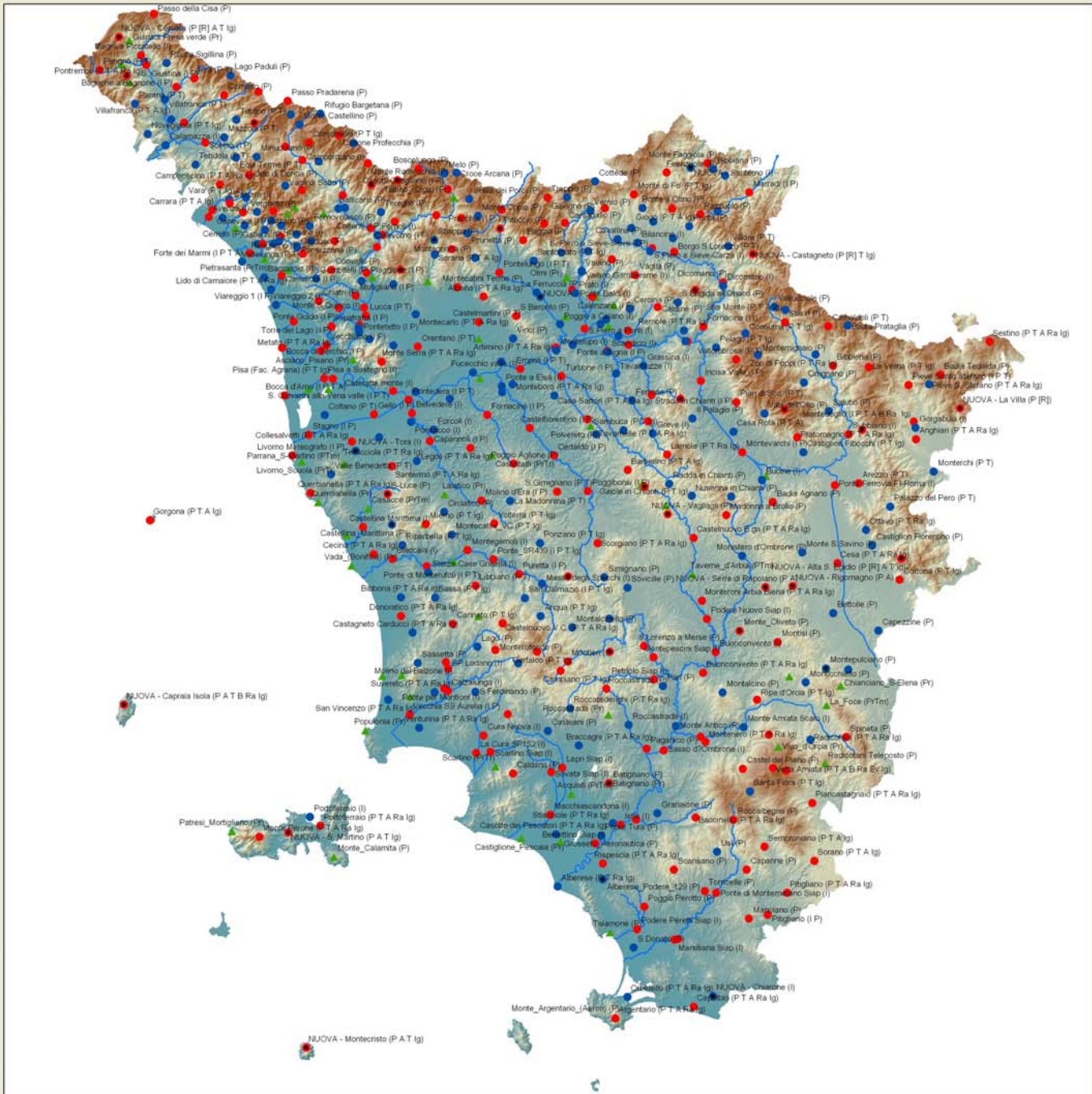
- St. auto - Trasm. Radio+GPRS (240)
- St. auto - Trasm. Radio (190)
- St. auto ricollocata
- ▲ St. trad. - Memoria locale (63)
- Idrografia

Sensori installati su singola stazione

P=Pluviometro
I=Idrometro
T=Termometro
Ilg=Ilgometro
A=Anemometro
B=Barometro
Ra=Radiometro
Ev=Evaporimetro



0 20 40 80 Km



RETE DI PROGETTO – Elenco delle Stazioni del Servizio Idrologico Regionale

ID STAZIONE	NOME	X_GB	Y_GB	QUOTA	ZONA ALLERTA	TRASMISSIONE	SENSORI	ATTIVAZIONE
TOS09000015	Bagnone a Bagnone	1578367,0	4907424,0	320	A1	2	I P	20/02/2008
TOS09001143	Comano	1589249,0	4905623,0	644,0	A1	2	P	01/10/2008
TOS09001220	Equi Terme	1591971,0	4891331,0	250,0	A1	1	P T	23/06/2006
TOS09001130	Iera	1582432,0	4909410,0	529,0	A1	2	P T	23/06/2006
TOS09000021	Licciana Nardi - Ponterotto	1580147,0	4899277,0	180	A1	2	I P T	01/01/2000
TOS09000001	Magra a Piccatello	1570312,0	4914739,0	292,0	A1	2	I	28/04/2008
TOS09001200	Mazzola	1589246,0	4895965,0	460,0	A1	1	P T	23/06/2006
TOS09001210	Minucciano	1596658,8	4891536,8	671,0	A1	1	P	23/06/2006
6_6	NUOVA - Cervara	1565240,8	4918900,2	725,0	A1	2	P (R) A T Ig	-
5_6	NUOVA - Pietra Piccata	1567035,0	4910055,1	908,0	A1	2	P (R) A T Ig	-
39_6	NUOVA - S. Vic. Fungara	1596091,0	4899236,5	925,0	A1	2	P (R) A T Ig	-
TOS09001110	Parana	1568914,0	4903617,0	692,0	A1	1	P T	23/06/2006
TOS09001160	Passo del cerreto	1597078,0	4906391,0	1250,0	A1	2	P T	23/06/2006
TOS09001053	Passo della Cisa	1573212,1	4924178,6	1014,0	A1	2	P	27/11/2008
TOS09001061	Patigno	1560872,0	4911373,0	744,0	A1	2	P T	23/06/2006
TOS09001088	Rocca Sigillina	1576119,0	4912900,0	435,0	A1	1	P	01/01/2007
TOS09001230	Tendola	1582713,0	4889758,0	410,0	A1	1	P T	23/06/2006
TOS09001180	Turano	1592015,0	4899953,0	500,0	A1	1	P T	23/06/2006
TOS09001120	Villafranca	1575703,3	4904614,7	118,0	A1	1	P T	23/06/2006
TOS01004007	Avenza	1585723,0	4877785,0	10,0	A2	2	I	08/07/2004
TOS09001000	Baccatoio	1598366,0	4863989,0	0,0	A2	1	I	01/07/2009
TOS01004005	Carrara	1590532,0	4880935,0	375,0	A2	2	I	08/07/2004
TOS01000056	Pian della Fioba	1596746,7	4878999,2	870,0	A2	1	P T Ig	01/01/2008
TOS01000025	Vara	1590400,0	4881819,0	431,0	A2	1	P T Ig	14/10/2003
89_6	NUOVA - Foce a Giovo	1628772,8	4886196,0	1670,0	A3	2	P (R) A T Ig	-

ID STAZIONE	NOME	X_GB	Y_GB	QUOTA	ZONA ALLERTA	TRASMISSIONE	SENSORI	ATTIVAZIONE
79_6	NUOVA - Renaio	1622796,2	4885111,4	1013,0	A3	2	P (R) T Ig	-
TOS01004611	Bilancino	1683530,0	4871894,0	224,0	B1	1	I	18/06/1991
TOS01000999	Borgo S.Lorenzo	1691828,0	4869887,0	193,0	B1	2	P T	19/03/1991
TOS01000911	Cavallina	1678958,0	4872707,0	275,0	B1	1	P	22/03/1991
TOS01001041	Consuma	1708073,0	4851212,0	950,0	B1	1	P T Ig	07/03/1991
TOS01001029	Dicomano	1702988,0	4862867,0	149,0	B1	2	P	19/04/2000
TOS01004625	Dicomano	1702980,0	4862076,0	142,0	B1	1	I	18/09/1991
TOS01004642	Fornacina	1698537,0	4852775,0	92,0	B1	2	I I	14/03/1991
TOS01000926	Le Croci (Barberino)	1682069,0	4875275,0	385,0	B1	1	P T A B Ev Ig	29/11/1991
TOS01000921	Mangona	1676018,0	4879748,0	517,0	B1	2	P T Ig	28/11/1991
TOS01000916	Monte di Fo'	1682648,0	4882968,0	767,0	B1	2	P T Ig	22/05/1991
182_6	NUOVA - Castagneto	1709832,8	4869351,0	1000,0	B1	2	P (R) T Ig	-
166_6	NUOVA - Monte Giovi	1696640,1	4861116,6	990,0	B1	2	P (R) A T Ig	-
TOS01000931	Ponte a Olmo	1684658,0	4879843,0	448,0	B1	1	P	24/05/1991
TOS01000979	Razuolo	1697758,0	4878362,0	631,0	B1	2	P	20/03/1991
TOS01000991	Ronta	1695298,0	4875647,0	365,0	B1	1	P	20/03/1991
TOS01004621	S. Piero a Sieve-Sieve	1686800,0	4870661,0	199,0	B1	2	I P	24/05/1991
TOS01000961	S.Agata di Mugello	1687113,0	4876752,0	336,0	B1	1	P	19/03/1991
TOS01004623	S.Piero a Sieve-Carza	1686348,0	4869964,0	205,0	B1	1	I	05/09/2000
TOS01000941	Vaglia	1683018,0	4864542,0	292,0	B1	2	P	22/05/1991
TOS01001011	Villore	1704208,0	4871147,0	382,0	B1	1	P T	20/03/1991
TOS01001103	Caldine	1688087,0	4857216,0	461,0	B2	2	P	15/02/2000
TOS01004784	Calenzano	1673230,0	4859537,0	61,0	B2	2	I P	05/09/2000
TOS01001225	Case Passerini	1675068,0	4853381,0	35,0	B2	1	P T A B Ra Ig	08/04/1992
TOS01001102	Cercina	1681737,0	4856878,0	345,0	B2	1	P	18/05/1999
TOS01004679	Firenze Uffizi	1681490,0	4848587,0	44,0	B2	2	I I I	19/06/1991

ID STAZIONE	NOME	X_GB	Y_GB	QUOTA	ZONA ALLERTA	TRASMISSIONE	SENSORI	ATTIVAZIONE
TOS01001096	Firenze Universita'	1681350,0	4851820,0	87,0	B2	2	P T A Ra Ig	09/05/1997
TOS01001189	Le Croci Calenzano	1677648,0	4868132,0	420,0	B2	2	P	16/03/2000
TOS01004659	Nave di Rosano	1694862,0	4849357,0	79,0	B2	2	I P	22/12/1989
TOS01001059	S.Brigida all'Opaco	1692708,0	4858312,0	425,0	B2	1	P	02/02/2000
TOS01004791	S.Piero a Ponti	1671422,0	4852276,0	34,0	B2	2	I	10/04/1991
TOS01004795	Sesto Fiorentino	1676316,0	4854386,0	36,0	B2	1	I	10/05/1995
TOS01004702	Ponte alle Mosse	1679175	4850623	50	B2	1	I	08/03/00
TOS01001263	Baggio	1657445,0	4872514,0	444,0	B3	2	P	13/03/1995
TOS01001151	Cantagallo	1666902,0	4876463,0	602,0	B3	2	P	22/12/1999
TOS01001273	Fattoria Iavello	1666127,0	4869667,0	560,0	B3	1	P	15/03/2000
TOS01001161	Gavigno	1667407,0	4882273,0	859,0	B3	1	P	15/03/2000
TOS01001269	La Ferruccia	1660487,0	4860537,0	40,0	B3	1	P	02/02/2000
TOS01001253	Montagnana	1646447,0	4868507,0	359,0	B3	1	P	18/05/1999
TOS10001240	Piteccio	1652147,0	4875118,0	235	B3	2	P	01/01/21
TOS01004875	Poggio a Caiano	1665817,0	4853340,0	32,0	B3	1	I	06/02/1991
TOS01004837	Pontelungo	1652018,0	4865095,0	66,0	B3	2	I P T	28/08/1991
TOS01004782	Prato	1669285,0	4860414,0	55,0	B3	1	I	23/01/2001
TOS01001205	Prato Universita'	1668612,0	4861118,0	62,0	B3	2	P T A Ig	08/05/1997
TOS01001634	S.Baronto	1655841,0	4855207,0	430,0	B3	2	P	13/09/2000
TOS01001181	Vaiano	1670737,0	4865309,0	105,0	B3	1	P	05/09/2000
TOS01004779	Vaiano Gamberame	1670786,0	4865527,0	95,0	B3	1	I	09/04/1991
TOS01001171	Vernio	1672740,0	4879225,0	299,0	B3	1	P	19/07/1994
-	NUOVA - Ombrone-PT	-	-	-	B3	1	I	-
TOS01001629	Castelmartini	1647317,0	4853827,0	20,0	B4	2	P T	16/12/1999
TOS01005101	Cateratte monte	1632947,0	4837889,0	10,0	B4	1	I	02/08/2000
TOS01004941	Empoli	1656775,0	4843092,0	16,0	B4	2	I P T	22/09/2000

ID STAZIONE	NOME	X_GB	Y_GB	QUOTA	ZONA ALLERTA	TRASMISSIONE	SENSORI	ATTIVAZIONE
TOS01001601	Montecatini Terme	1642422,0	4861757,0	137,0	B4	2	P	09/02/2000
86_6	NUOVA - Pizzorne	1629508,8	4865765,0	883,0	B4	2	P(R) AT Ig	-
TOS01001889	Orentano	1633377,0	4848182,0	22,0	B4	2	PT	22/12/1999
TOS01005191	S. Giovanni alla Vena valle	1627771,0	4838082,0	8,0	B4	2	IPT	27/02/1991
TOS01001561	Serra Pistoiese	1641092,0	4870488,0	803,0	B4	2	P	14/09/2000
TOS10001550	Stiappa	1637157,0	4872548,0	627,0	B4	1	P	-
TOS01001371	Vinci	1655087,0	4850017,0	80,0	B4	1	P	03/02/2000
-	NUOVA - Santerno	-	-	-	B5	1	I	-
TOS01005251	Bocca d'Arno	1603065,0	4837063,0	2,0	C1	2	IPTA	20/04/2000
TOS01005365	Castellina Marittima	1620876,0	4807012,0	44,0	C1	2	I	01/09/2004
TOS10002015	Castellina_Marittima	1627496,0	4807576,0	339,0	C1	1	P	-
TOS01001831	Coltano	1612166,0	4832602,0	3,0	C1	1	PT	21/12/1999
TOS01005262	Gello	1623371,0	4832768,0	5,0	C1	2	IP	06/09/2000
TOS01005981	Livorno Mareografo	1604806,0	4823346,0	0,0	C1	2	IP	09/06/2000
TOS01000544	Pisa (Fac. Agraria)	1614006,0	4840887,0	4,0	C1	2	PT Ig	09/06/2000
TOS01005231	Pisa a Sostegno	1612074,0	4840937,0	2,0	C1	2	I	28/02/1991
TOS01005181	Pontedera	1631287,0	4836008,0	9,0	C1	2	IPT	28/07/1993
TOS10002000	S-Luce	1626500,6	4814540,7	200,0	C1	2	P	-
TOS01005342	Stagno	1608559,0	4828048,0	1,0	C1	2	IP	07/09/2000
TOS01001961	Valle Benedetta	1613623,0	4819049,0	261,0	C1	1	PT	19/04/2000
-	NUOVA - Tora	-	-	-	C1	1	I	-
TOS01002085	Anqua	1661389,8	4786686,8	442,0	C2	1	PT Ig	01/04/2006
TOS01002171	Canneto	1641393,1	4784915,4	309,0	C2	2	PT Ig	01/04/2006
TOS01002071	Gerfalco	1660592,3	4778577,7	741,0	C2	2	PT Ig	01/04/2006
TOS01002161	Libbiano	1646594,0	4793632,0	428,0	C2	2	PT	24/04/2003
TOS0100213	Montecatini_	1641197,8	4805286,3	383,0	C2	1	PT Ig	01/04/2006

ID STAZIONE	NOME	X_GB	Y_GB	QUOTA	ZONA ALLERTA	TRASMISSIONE	SENSORI	ATTIVAZIONE
1	VC							
TOS01005395	Montegemoli	1644708,5	4801749,4	57,0	C2	2	I	01/04/2006
140_7	NUOVA - Mensano	1667686,9	4795772,7	362,0	C2	2	P T A Ig	-
TOS01005401	Ponte di Monterufoli	1635452,0	4798055,0	33,0	C2	2	I P T	24/04/2003
TOS01005386	Ponte_SR439	1650650,1	4799622,9	80,0	C2	2	I P T Ig	01/04/2006
TOS01002115	Ponzano	1661239,4	4803358,7	340,0	C2	1	P T Ig	01/04/2006
TOS01005373	Puretta	1656490,0	4796273,0	159,0	C2	2	I P	19/09/2000
TOS01002231	Riparbella	1629853,0	4802898,8	239,0	C2	1	P T Ig	01/04/2006
TOS01005377	San Dalmazio	1657810,4	4790819,1	247,0	C2	1	I P T Ig	01/04/2006
TOS01002181	Sassa	1637324,8	4790953,2	389,0	C2	1	P T Ig	01/04/2006
TOS01005415	Steccaia	1627643,8	4799733,5	10,0	C2	2	I	01/04/2006
TOS01005403	Sterza Case Grisella	1635764,1	4796641,4	37,0	C2	1	I	01/04/2006
TOS01005372	Masso degli Specchi	1661738	4794081	127	C2	1	I	09/20/2000
TOS01005485	Calzalunga	1640232,0	4769560,0	45,0	C3	2	I	17/04/1996
TOS01005573	Cura Nuova	1648373,0	4759443,0	40,0	C3	2	I	05/08/2004
TOS01005572	La Cura SP152	1646736,0	4755457,0	10,0	C3	2	I	19/10/2004
TOS01002351	Lago	1646961,6	4779690,7	307,0	C3	1	P	04/04/2006
TOS01005465	Molino del Balzone	1639762,3	4776170,0	73,0	C3	2	I	04/04/2006
TOS01002371	Monterotondo	1651067,0	4778989,0	524,0	C3	2	P	17/04/1996
TOS01005471	Ponte per Montioni	1639405,0	4770160,0	47,0	C3	2	I	17/04/1996
TOS03002476	S.Ferdinando	1646517,0	4769383,0	271,0	C3	1	P	01/01/2002
TOS01002381	Sassetta	1633384,5	4776003,7	343,0	C3	1	P	04/04/2006
TOS03005577	Scarlino Siap	1649980,0	4755691,0	10,0	C3	2	I	24/03/2002
TOS01005461	SP Lodano	1640303,2	4774655,2	68,0	C3	2	I	04/04/2006
TOS01005489	Vecchia SS Aurelia	1631534,7	4764194,2	7,0	C3	2	I P	04/04/2006
1_10	NUOVA - Capraia Isola	1566364,5	4766482,1	200	C4	2	P T A B Ra Ig	-

ID STAZIONE	NOME	X_GB	Y_GB	QUOTA	ZONA ALLERTA	TRASMISSIONE	SENSORI	ATTIVAZIONE
5_10	NUOVA - Montecristo	1607926,1	4688185,6	200	C4	2	P T A Ig	-
6_10	NUOVA - S. Martino	1603866,8	4737312,8	325,0	C4	2	P T A Ig	-
TOS01005441	Portoferraio	1608787,0	4740835,0	1,0	C4	1	I	28/05/2003
TOS01004971	Castelfiorentino	1658971,0	4829611,0	48,0	D1	2	I P	12/03/1991
TOS01004967	Certaldo	1664392,0	4823338,0	61,0	D1	2	I P	22/01/2001
TOS01004965	Poggibonsi	1672180,0	4815208,0	95,0	D1	2	I P	20/07/1993
TOS01004981	Ponte a Elsa	1652567,0	4839147,0	47,0	D1	1	I	14/03/2000
TOS01001419	S.Gimignano	1665137,0	4815106,0	306,0	D1	2	P T	23/02/2000
TOS01001379	Simignano	1675887,0	4795536,0	420,0	D1	1	P	24/02/2000
TOS01005161	Belvedere	1632032,0	4833011,0	15,0	D2	2	I	22/01/2001
TOS01005131	Capannoli	1636160,0	4826651,0	29,0	D2	2	I P	10/05/1989
TOS01005135	Forcoli	1637026,9	4829220,6	28,0	D2	1	I	15/04/2008
TOS01005005	Fornacino	1649231,0	4832594,0	46,0	D2	2	I P	31/08/1994
TOS01005001	Fucecchio valle	1645994,0	4842327,0	9,0	D2	1	I	29/08/1991
TOS01001679	La Madonna	1654472,0	4813001,0	289,0	D2	1	P T	23/02/2000
TOS01002011	Miemo	1635251,4	4807685,4	420,0	D2	2	P T Ig	01/04/2006
TOS01005115	Molino d'Era	1647919,0	4813041,0	100,0	D2	2	I P	03/08/2000
TOS01001711	Orciatico	1639421,0	4810446,0	351,0	D2	1	P	17/02/2000
TOS01001445	Poggio Aglione	1655263,0	4821495,0	452,0	D2	2	P	20/07/1993
TOS01005151	Ponsacco	1631854,9	4831033,0	19,0	D2	1	I	15/04/2008
TOS01001664	Volterra	1650831,0	4807812,0	443,0	D2	2	P T Ig	13/03/1995
TOS01005672	Buonconvento	1701258,0	4778496,0	140,0	D3	2	I	16/05/2006
TOS01002779	Campiano	1665919,0	4774229,0	500,0	D3	2	P T Ig	03/08/2004
TOS03002613	Monistero d'Ombrone	1707371,0	4800451,0	216,0	D3	1	P	01/01/2002
TOS03002733	Montalcinello	1668560,0	4784092,0	381,0	D3	1	P	01/01/2002
TOS03002801	Monte Antico	1692236,0	4761564,0	75,0	D3	1	P	01/01/2002

ID STAZIONE	NOME	X_GB	Y_GB	QUOTA	ZONA ALLERTA	TRASMISSIONE	SENSORI	ATTIVAZIONE
TOS0300571 1	Montepescini Siap	1687139,0	4777312,0	173,0	D3	2	I	24/03/2002
TOS0100580 1	Montieri	1667564,0	4776338,0	365,0	D3	2	I	01/01/2004
160_7	NUOVA - Monticiano	1677160,9	4778595,6	95,0	D3	2	P T Ig	-
208_7	NUOVA - Vagliagli	1690353,6	4809939,4	302,0	D3	2	P	-
TOS0300278 9	Pari	1689261,0	4770743,0	283,0	D3	1	P	01/01/2002
TOS0300572 5	Petriolo Siap	1687234,0	4772214,0	154,0	D3	2	I	24/03/2002
TOS0300565 5	Podere Nuovo Siap	1699288,0	4786046,0	146,0	D3	2	I	24/03/2002
TOS0300276 6	S.Lorenzo a Merse	1684939,0	4779885,0	195,0	D3	2	P	01/01/2002
TOS0300276 1	Sovicille	1681180,0	4793174,0	225,0	D3	1	P	01/01/2002
TOS0100112 9	Ferrone	1682187,0	4835897,0	140,0	D4	1	P	21/09/2000
TOS1900070 4	Grassina	1684824,0	4843806,0	85,0	D4	1	I	16/11/2007
TOS0100470 5	Greve	1686983,0	4828399,0	225,0	D4	1	I	21/09/1994
TOS0100490 1	Montelupo	1664940,0	4847342,0	28,0	D4	1	I	20/06/1991
TOS0100491 5	Montespertoli	1672089,0	4831583,0	183,0	D4	2	I P T Ig	21/02/2000
187_7	NUOVA - Castellina in Chianti	1685129,7	4816225,9	578,0	D4	2	P T A Ig	-
TOS0100481 1	Ponte a Signa	1668711,0	4848580,0	40,0	D4	1	I P	26/01/2001
TOS0100128 4	Radda in Chianti	1690686,0	4816875,0	582,0	D4	1	P	22/09/2000
TOS0100121 5	S.Giusto	1676594,0	4847277,0	41,0	D4	2	P T A B Ra Ig	04/03/1992
TOS0100473 1	Scandicci	1676651,0	4846999,0	41,0	D4	1	I	25/01/2001
TOS0100472 5	Strada in Chianti	1686654,0	4837189,0	142,0	D4	2	I P	02/09/1994
TOS0100472 3	Tavarnuzze	1678629,0	4842147,0	70,0	D4	1	I	07/03/1995
TOS0100492 1	Turbone	1666165,0	4841452,0	50,0	D4	2	I P	08/08/2000
TOS0100062 1	Badia Prataglia	1731414,0	4853047,0	847,0	E1	1	P	28/03/1991
TOS0100062 6	Bibbiena	1728008,0	4843837,0	411,0	E1	2	P	07/03/1991
TOS0100061 1	Camaldoli	1726984,0	4852857,0	800,0	E1	2	P T	21/03/1991
TOS0100063	La Verna	1736239,0	4843507,0	1122,0	E1	2	P T Ig	06/03/1991

ID STAZIONE	NOME	X_GB	Y_GB	QUOTA	ZONA ALLERTA	TRASMISSIONE	SENSORI	ATTIVAZIONE
9								
TOS01000591	Montemignai o	1710918,0	4846357,0	765,0	E1	1	P	07/03/1991
295_7	NUOVA – Cima Bottigliana	1717004,7	4833845,7	1042,0	E1	2	P (R) T A Ig	-
327_7	NUOVA - Montecchio	1734700,7	4829258,0	580,0	E1	2	P T A Ig	-
TOS01000601	Ortignano	1721443,0	4840007,0	480,0	E1	1	P	06/03/1991
TOS01000651	Salutio	1727103,0	4833481,0	321,0	E1	1	P	07/03/1991
TOS01004379	Stia	1717111,0	4853769,0	451,0	E1	2	I P	28/03/1991
TOS01004411	Subbiano	1731587,0	4828203,0	256,0	E1	2	I	26/03/1991
TOS01000571	Vallucchiole	1714678,0	4857247,0	765,0	E1	1	P	20/03/1991
TOS01000771	Arezzo	1733933,0	4816991,0	264,0	E2	2	P T	05/03/1991
TOS01000721	Bettolle	1728073,0	4787375,0	281,0	E2	1	P	24/01/1991
TOS01000701	Capezzine	1738413,0	4783390,0	291,0	E2	1	P	12/02/1991
TOS01000761	Castiglion Fiorentino	1736978,0	4802836,0	317,0	E2	1	P	28/03/1991
TOS01000751	Cortona	1743244,0	4794990,0	413,0	E2	2	P T Ig	03/11/1991
TOS01000741	Monte S.Savino	1721068,0	4801196,0	320,0	E2	1	P	12/02/1991
TOS10000690	Montepulcian o	1726468,0	4774765,0	607,0	E2	1	P	-
289_7	NUOVA - Rigomagno	1718864,1	4793559,2	400,0	E2	2	P A	-
TOS01004521	Ponte Ferrovia FI- Roma	1728495,0	4816533,0	232,0	E2	2	I	27/03/1991
TOS01000811	Badia Agnano	1714318,0	4812701,0	260,0	E3	2	P	05/03/1991
TOS01004568	Bucine	1711880,0	4817743,0	172,0	E3	1	I	23/09/1993
TOS01000891	Il Palagio	1696018,0	4831791,0	317,0	E3	1	P	13/02/1991
TOS01004591	Incisa Valle	1697930,0	4840381,0	108,0	E3	2	I P	18/04/2000
TOS03002643	Madonna a Brolio	1703708,0	4809758,0	415,0	E3	2	P	01/01/2002
TOS01004571	Montevarchi	1707344,0	4824092,0	134,0	E3	2	I P	05/12/1991
TOS01004661	Nave Rosano valle	1694423,0	4849471,0	72,0	E3	1	I	23/04/1991
212_7	NUOVA -	1693275,5	4836324,9	496,0	E3	2	P	-

ID STAZIONE	NOME	X_GB	Y_GB	QUOTA	ZONA ALLERTA	TRASMISSIONE	SENSORI	ATTIVAZIONE
	Poggio alla Croce							
TOS01000831	Nusenna in Chianti	1704833,0	4813976,0	556,0	E3	1	P	14/02/1991
TOS01000881	Pian di Sco'	1706068,0	4835527,0	382,0	E3	2	P T	23/01/1991
TOS01000901	Vallombrosa	1705948,0	4845267,0	969,0	E3	2	P T	07/03/1991
TOS01000861	Villa dell'Olio	1712428,0	4832931,0	610,0	E3	1	P	13/02/1991
TOS19000701	Monterchi	1751019,0	4819680,0	302,0	E4	1	P T	01/09/2009
338_7	NUOVA - Alta S. Egidio	1743604,9	4799847,1	1050,0	E4	2	P (R) A T Ig	-
358_7	NUOVA - La Villa	1757006,2	4834114,8	670,0	E4	2	P (R)	-
TOS19000703	Palazzo del Pero	1741116,0	4811681,0	409,0	E4	1	P T	01/05/2009
TOS19000702	Pieve Santo Stefano	1745280,0	4839419,0	431,0	E4	2	I P T	01/05/2009
TOS03002901	Castel del Piano	1707493,0	4751819,0	615,0	F1	2	P	01/01/2002
TOS03002701	Montalcino	1702889,0	4769281,0	599,0	F1	1	P	01/01/2002
TOS01005761	Monte Amiata Scalo	1707691,5	4761357,8	170,0	F1	1	I	01/05/2005
TOS10002620	Monte_Oliveto	1706791,9	4783335,1	276	F1	2	P	01/01/34
TOS03002869	Monticchiello	1721839,0	4771569,0	463,0	F1	1	P	01/01/2002
TOS03002888	Montisi	1715434,0	4780783,0	365,0	F1	2	P	01/01/2002
270_7	NUOVA - Serre di Rapolano	1712666,1	4793293,6	350,0	F1	2	P A	-
TOS03005781	S. Angelo Cinigiano Siap	1697858,0	4759152,0	97,0	F1	2	I	24/03/2002
TOS03002819	Spineta	1731093,0	4759059,0	515,0	F1	2	P	01/01/2002
TOS10002970	Alberese_Podere_129	1675557,0	4726584,0	20,0	F2	1	P	-
TOS10002570	Batignano	1676987,0	4748555,0	163,0	F2	2	P	-
TOS03005841	Berrettino Siap	1673872,0	4734834,0	12,0	F2	2	I	24/03/2002
TOS03002551	Caldana	1655086,0	4750745,0	341,0	F2	2	P	31/12/1899
TOS03002515	Casteani	1663025,0	4760497,0	59,0	F2	1	P	01/01/2002
TOS03005811	Castellina Siap	1683212,0	4740235,0	31,0	F2	2	I	24/03/2002

ID STAZIONE	NOME	X_GB	Y_GB	QUOTA	ZONA ALLERTA	TRASMISSIONE	SENSORI	ATTIVAZIONE
TOS0300294 1	Granaione	1688019,0	4741688,0	106,0	F2	1	P	01/01/2002
TOS0100582 2	Istia	1679619,0	4739045,0	18,0	F2	2	I	14/07/2004
TOS0300561 1	Lepri Siap	1666354,0	4752099,0	15,0	F2	2	I	24/03/2002
TOS0100560 1	Macchiascandona	1663604,0	4741332,0	10,0	F2	2	I	13/07/2004
TOS0300292 1	Paganico	1685574,0	4756440,0	59,0	F2	2	P	30/04/2000
TOS0300296 1	Ponte Tura	1675193,0	4736566,0	13,0	F2	1	P	01/01/2002
TOS0100578 5	Roccastrada	1681494,0	4761845,0	113,0	F2	1	I	12/07/2004
TOS0300253 1	Roccastrada	1676376,0	4770089,0	372,0	F2	2	P	01/01/2002
TOS0100579 1	Sasso d'Ombrone	1689451,0	4756021,0	66,0	F2	2	I	20/09/2000
TOS0300561 5	Sovata Siap	1663814,0	4751103,0	11,0	F2	2	I	24/03/2002
TOS0300304 1	Capanne	1708352,0	4728859,0	362,0	F3	2	P	01/01/2002
TOS0300307 9	Manciano	1708887,0	4717654,0	325,0	F3	2	P	01/01/2002
TOS0300308 9	Marsiliana	1692742,0	4712991,0	22,0	F3	2	P	01/01/2002
TOS0300589 5	Marsiliana Siap	1691874,0	4712855,0	12,0	F3	2	I	24/03/2002
TOS0300586 5	Podere Peretti Siap	1683369,0	4715246,0	10,0	F3	2	I	24/03/2002
TOS0300301 1	Poggio Perotto	1685012,0	4720359,0	87,0	F3	2	P	01/01/2002
TOS0300588 1	Ponte di Montemerano Siap	1701433,0	4723557,0	96,0	F3	2	I	24/03/2002
TOS0300301 9	Roccalbegna	1705372,0	4740210,0	521,0	F3	2	P	01/01/2000
TOS0300309 9	S.Donato	1682617,0	4711049,0	8,0	F3	1	P	01/01/2002
TOS0300307 1	Scansano	1691786,0	4728825,0	437,0	F3	2	P	01/01/2002
TOS0300306 3	Torricelle	1698872,0	4723951,0	170,0	F3	2	P	01/01/2002
TOS0300305 3	Usi	1701637,0	4732924,0	371,0	F3	1	P	01/01/2002
-	NUOVA - Chiarone	-	-	-	F3	1	I	-

RETE DI PROGETTO – Elenco delle Stazioni afferenti il bacino del Fiume Serchio

ID STAZIONE	NOME	X_GB	Y_GB	QUOTA	ZONA ALLERTA	TRASMISSIONE	SENSORI	ATTIVAZIONE
TOS02000083	Azzano	1598538,0	4874891,0	432,0	A2	1	P	29/02/1996
TOS02004059	Camaioere	1602321,0	4864443,0	39,0	A2	2	I P	29/08/1995
TOS02004011	Canevara	1593517,0	4878830	106,0	A2	2	I P	28/11/2001
TOS02000077	Cardoso	1605791,0	4873818,0	396,0	A2	1	P	20/07/1998
TOS02000088	Cerreto	1593956,0	4875898,0	476,0	A2	1	P	20/07/1998
TOS02000081	Cervairole	1600000,0	4876919,0	1035,0	A2	1	P T Ig	28/02/1996
TOS02004055	Forte dei Marmi	1593367,0	4867613,0	0,0	A2	1	I P T A	28/03/2001
TOS02000078	Gallena	1600466,0	4871741,0	353,0	A2	1	P	28/03/2001
TOS02000075	Pomezzana	1605818,0	4870868,0	481,0	A2	1	P	29/02/1996
TOS02004045	Ponte Tavole	1595072,0	4869511,0	11,0	A2	2	I P T B Ig	12/03/1996
TOS02000079	Retignano	1602126,0	4873288,0	424,0	A2	2	P	29/02/1996
TOS02004017	Ruosina	1601788,0	4872335,0	227,0	A2	1	I	22/09/2004
TOS02004029	Seravezza 2	1598053,0	4871613,0	36,0	A2	2	I	13/03/1996
TOS02000064	Terrinca	1602288,0	4875842,0	830,0	A2	1	P	27/03/2001
TOS02004081	Torre del Lago	1605084,0	4853913,0	2,0	A2	2	I P pH T-H ₂ O Cond OD	08/09/1995
TOS02000108	Vallelunga	1607246,0	4869376,0	712,0	A2	2	P T	17/09/1999
TOS02000047	Vergheto	1594287,0	4882190,0	411,0	A2	1	P	28/11/2001
TOS02004091	Viareggio 1	1601072,0	4857709,0	4,0	A2	2	I P pH T-H ₂ O Cond OD	22/02/1996
TOS02004101	Viareggio 2	1601071,0	4857708,0	4,0	A2	1	I P pH T-H ₂ O Cond OD	22/02/1996
TOS02004271	Borgo a Mozzano	1624071,0	4870943,0	142,0	A3	2	I P	27/09/1995
TOS02000351	Boscolungo	1633559,0	4888779,0	1397,0	A3	2	P	25/10/1995
TOS02004195	Calavorno	1622652,0	4875203,0	113,0	A3	2	I P	13/03/1996
TOS02000241	Campagrina	1600456,0	4879148,0	811,0	A3	2	P	14/06/1996
TOS02004115	Camporgiano	1607066,0	4890831,0	380,0	A3	2	I	20/10/1999
TOS02000161	Capanne di Sillano	1604445,0	4901184,0	1012,0	A3	1	P	04/06/1996

ID STAZIONE	NOME	X_GB	Y_GB	QUOTA	ZONA ALLERTA	TRASMISSIONE	SENSORI	ATTIVAZIONE
TOS02000221	Casone Profecchia	1615420,0	4896430,0	1340,0	A3	2	P	30/08/1995
TOS02004215	Casotti Cutigliano	1640216,0	4884102,0	633,0	A3	2	IP	27/09/1995
TOS02004255	Chifenti	1625321,0	4873693,0	111,0	A3	2	IP	26/09/1995
TOS02000372	Croce Arcana	1642203,0	4887880,0	1640,0	A3	1	P	13/06/1996
TOS02000332	Fabbriche Vallico	1614395,0	4872308,0	402,0	A3	2	P	10/01/1996
TOS02004203	Fornoli	1624202,0	4873638,0	100,0	A3	1	I	19/10/1999
TOS02000281	Fornovolasco	1608768,0	4875762,0	514,0	A3	1	P	05/06/1996
TOS02000299	Gallicano	1615246,0	4879699,0	186,0	A3	1	P	26/09/1995
TOS02000359	Melo	1639426,0	4887759,0	993,0	A3	1	P	15/05/1996
TOS02000171	Monte Castellino	1606454,7	4898862,2	877,0	A3	1	P	14/02/1996
TOS02000275	Monte Romecchio	1622043,0	4890099,0	1618,0	A3	2	P	05/06/1996
TOS02000177	Orto di Donna	1595018,0	4887369,0	1450,0	A3	2	P	14/05/1996
TOS02000329	Palagnana	1609041,0	4872318,0	764,0	A3	1	P	14/06/1996
TOS02000155	Passo Pradarena	1603708,0	4904258,0	1564,0	A3	2	P	04/06/1996
TOS02004165	Ponte di Campia	1616282,0	4882772,0	186,0	A3	2	IP	26/09/1995
TOS02004231	Ponte di Lucchio	1637581,0	4878182,0	353,0	A3	2	IP	27/07/1995
TOS02000441	Prunetta	1644662,0	4874074,0	946,0	A3	1	P	16/05/1996
TOS02000431	S.Marcello Pistoiese	1643295,0	4877532,0	1024,0	A3	2	P	26/10/1995
TOS02000401	Selva dei Porci	1645159,0	4881864,0	798,0	A3	1	P	15/05/1996
TOS02000339	Tereglio	1625010,0	4878920,0	547,0	A3	1	P	27/07/1995
TOS02000191	Vagli di Sotto	1603169,0	4884930,0	602,0	A3	1	P	10/01/1996
TOS02000203	Villacollemandina	1610792,0	4890455,0	521,0	A3	1	P	30/08/1995
TOS02000515	Chiatri	1610814,0	4858605,0	254,0	A4	2	P	11/07/1995
TOS02000483	Convalle	1613684,0	4865722,0	452,0	A4	2	P	13/07/1995
TOS02000494	Gombitelli	1610237,0	4863750,0	401,0	A4	1	P	12/07/1995
TOS02000512	Lucca	1621547,0	4855274,0	20,0	A4	2	PT	26/07/1995

ID STAZIONE	NOME	X_GB	Y_GB	QUOTA	ZONA ALLERTA	TRASMISSIONE	SENSORI	ATTIVAZIONE
TOS0200429 1	Monte S.Quirico	1621129,0	4857140,0	18,0	A4	2	I	21/10/1999
TOS0200428 6	Mutigliano	1619252,0	4859816,0	34,0	A4	2	IP	07/09/1995
TOS0200428 4	Piaggione	1621675,0	4865034,0	45,0	A4	2	IP	27/09/1995
TOS0200430 5	Ponte Guido	1615414,0	4857046,0	18,0	A4	2	IP	18/04/1996
TOS0200431 5	Pontetetto	1620103,0	4853164,0	11,0	A4	2	IP	18/04/1996
TOS0200431 1	Ripafratta	1613727,0	4852790,0	9,0	A4	2	IIP	26/07/1995
TOS0200042 1	Monte Oppio	1647114,0	4878048,0	820,0	B5	1	P	26/10/1995
TOS0200436 9	Bocca di Serchio	1602450,0	4847947,0	0,0	C1	2	IP	25/07/1995
TOS0200436 5	Vecchiano	1612577,0	4848474,0	0,0	C1	2	IP	13/06/1996
TOS0100433 5	Guappero cassa mezzo	1620001,0	4852023,0	13,0	A4	1	I	02/07/2004
TOS0100433 6	Guappero cassa monte	1620055,0	4851500,0	14,0	A4	1	I	02/07/2004
TOS0100433 7	Guappero cassa valle 1 - 2	1619880,0	4852546,0	14,0	A4	1	II	02/07/2004

RETE DI PROGETTO – Elenco delle Stazioni ARSIA

NOME	X_GB	Y_GB	QUOTA	ZONA ALLERTA	TRASMISSIONE	SENSORI	ATTIVAZIONE
Novegigola	1571815,0	4896720,0	399,0	A1	1	PT Ig	02/07/1996
Pontremoli	1571076,0	4913119,0	306,0	A1	1	PTA Ra Ig	20/07/2001
Villafranca	1577137,0	4900073,0	140,0	A1	1	PTA Ig	02/07/1996
Campocecina	1588279,0	4885216,0	838,0	A2	2	PTA Ra Ig	20/07/2021
Candia Scurtarola	1588863,0	4877598,0	123,0	A2	1	PTA Ra Ig	19/07/1990
Carrara	1586568,0	4879362,0	39,0	A2	2	PTA Ig	19/01/2019
Lido di Camaione	1599980,0	4861266,0	1,0	A2	1	PTA Ra Ig	19/05/1990
Strettoia	1596919,0	4871614,0	66,0	A2	1	PTA Ig	25/07/1996
Bagni di Lucca	1628167,0	4876740,0	573,0	A3	2	PT Ig	19/07/1996
Barga	1616787,0	4879900,0	219,0	A3	1	PTA Ra Ig	19/06/1993
Careggine	1606959,0	4883899,0	1055,0	A3	2	PTA Ig	19/05/2005
Orecchiella	1608596,0	4894790,0	1094,0	A3	2	PT Ig	19/05/2005
Passo Radici	1618747,0	4894657,0	1618,0	A3	1	PTA Ra Ig	19/07/1998
Piazza al Serchio	1603168,0	4893864,0	633,0	A3	2	PTA Ra Ig	31/12/1994
Aquilea	1620541,0	4863202,0	102,0	A4	1	PT Ra Ig	19/06/1993
Monte Pisano Nord	1622425,0	4849941,0	179,0	A4	1	PTA Ra Ig	04/06/2004
Borgo S. Lorenzo	1691586,0	4872938,0	273,0	B1	1	PTA Ra Ig	23/12/1993
Gioigo	1691359,0	4879731,0	880,0	B1	2	PTA Ig	16/06/1998
Remole	1694054,0	4851920,0	207,0	B2	1	PT Ra Ig	08/10/1991
Artimino	1664904,0	4848010,0	95,0	B3	2	PTA Ra Ig	01/09/1994
Santomato	1659783,0	4867760,0	119,0	B3	1	PT Ig	05/07/1996
Vaiano acquedotto	1672238,0	4869995,0	300,0	B3	1	PTA Ra Ig	04/06/2004
Albano	1648363,0	4859592,0	292,0	B4	2	PTA Ra Ig	31/03/1995
Cerreto Guidi	1652427,0	4844778,0	53,0	B4	1	PTA Ra Ig	07/12/1993
Montecarlo	1632902,0	4855569,0	72,0	B4	1	PTA Ra Ig	01/01/1990
Pieve di Compito	1627847,0	4848488,0	78,0	B4	1	PTA Ra Ig	28/01/1993
San Pietro a Marcigliano	1627853,0	4862487,0	226,0	B4	1	PTA Ra Ig	29/01/1993
Sorana	1637279,0	4869228,0	414,0	B4	1	PTA Ig	17/05/1996
Acquerino	1662259,0	4876271,0	897,0	B5	2	PT Ra Ig	29/07/1996
Cecina	1623337,0	4800836,0	58,0	C1	2	PTA Ra Ig	19/07/1989
Collesalveti	1618360,0	4826506,0	19,0	C1	2	PTA Ra Ig	19/04/1988
Metato	1611317,0	4847183,0	4,0	C1	2	PTA Ra Ig	19/08/2001
Monte Serra	1625132,0	4844785,0	853,0	C1	2	PTA Ra Ig	07/03/1998
Quercianella	1608954,0	4814774,0	167,0	C1	2	PTA Ra Ig	04/06/2004
Santeramo	1627481,0	4820930,0	185,0	C1	2	PTA Ra Ig	30/05/1990
Siberia	1624562,0	4827496,0	30,0	C1	1	PTA Ra Ig	18/05/1989

NOME	X_GB	Y_GB	QUOTA	ZONA ALLERTA	TRASMISSIONE	SENSORI	ATTIVAZIONE
Bibbona	1629537,0	4790992,0	66,0	C3	1	P T A Ra Ig	21/06/1988
Castagneto Carducci	1632213,0	4782925,0	113,0	C3	1	P T A Ra Ig	30/05/1988
Castelnuovo V.C.	1652723,0	4785032,0	741,0	C3	2	P T A Ra Ig	23/11/1993
Donoratico	1629546,0	4786705,0	36,0	C3	2	P T A Ra Ig	01/08/1989
Massa Marittima Filetto	1656312,0	4775896,0	618,0	C3	1	P T Ig	20/09/2002
Massa Marittima Valpiana	1653943,0	4764274,0	291,0	C3	2	P T A Ra Ig	19/02/1993
San Vincenzo	1626644,0	4767636,0	12,0	C3	1	P T A Ra Ig	16/11/1989
Suvereto	1637209,0	4769306,0	34,0	C3	1	P T A Ra Ig	31/12/1994
Venturina	1633692,0	4761216,0	8,0	C3	1	P T A Ra Ig	01/08/1989
Gorgona	1572363,0	4808561,0	180,0	C4	2	P T A Ig	24/04/1998
Monte Perone	1597339,0	4736303,0	687,0	C4	2	P T A Ra Ig	20/06/2003
Portoferraio	1611175,0	4738850,0	14,0	C4	2	P T A Ra Ig	01/04/1989
Barberino	1681245,0	4820046,0	455,0	D1	2	P T A Ig	19/07/1992
Monteboro	1654977,1	4839616,5	76,0	D1	1	P T A Ra Ig	18/02/1998
San Miniato Poggio al Pino	1652577,0	4837839,0	123,0	D1	1	P T A Ra Ig	05/03/1993
Scorgiano	1674393,0	4803320,0	215,0	D1	2	P T A Ra Ig	28/11/1992
Legoli	1645419,0	4825097,0	190,0	D2	2	P T A Ra Ig	04/06/2004
Montopoli	1640688,0	4836282,0	27,0	D2	1	P T A Ig	05/03/1993
Terriciola	1633198,0	4822125,0	89,0	D2	1	P T Ra Ig	29/04/1992
Castelnuovo B.ga	1696273,0	4804546,0	280,0	D3	2	P T A Ra Ig	18/12/1991
Gaiole in Chianti	1695856,0	4814180,0	350,0	D3	1	P T Ig	09/07/1996
Monteroni Arbia Biena	1698186,0	4790208,0	183,0	D3	2	P T A Ra Ig	03/01/1991
Pentolina	1677028,0	4786096,0	431,0	D3	1	P T A Ra Ig	05/05/1995
Casa Sartori	1664547,6	4837055,9	197,0	D4	1	P T A Ra Ig	20/09/2007
Greve in Chianti	1685888,0	4831161,0	233,0	D4	2	P T A Ra Ig	14/12/1993
Lamole	1690245,0	4823531,0	505,0	D4	2	P T Ra Ig	19/07/1992
Sambuca	1680259,0	4829134,0	308,0	D4	1	P T Ig	23/01/2001
Tavarnelle	1674053,0	4828163,0	355,0	D4	1	P T A Ra Ig	30/07/1992
Stia Monte	1717215,0	4856552,0	801,0	E1	1	P T A Ig	21/07/1998
Zoo di Poppi	1724085,6	4846403,1	419,0	E1	1	P T Ra Ig	28/05/1999
Cesa	1729089,0	4798772,0	247,0	E2	2	P T A Ra Ig	01/01/1974
Montepulciano Azienda	1731548,0	4774463,0	320,0	E2	1	P T A Ig	25/11/2004
Ottavo	1735553,0	4806368,0	409,0	E2	1	P T Ra Ig	11/02/1993
Casa Rota	1705377,0	4828801,0	178,0	E3	1	P T A	26/08/2007
Castiglion	1721321,0	4824112,0	299,0	E3	1	P T Ig	07/05/1996

NOME	X_GB	Y_GB	QUOTA	ZONA ALLERTA	TRASMISSIONE	SENSORI	ATTIVAZIONE
Fibocchi							
Pelago	1701390,0	4847974,0	345,0	E3	1	PT Ig	08/07/1996
Pratomagno	1719936,0	4827489,0	654,0	E3	2	PT A Ra Ig	05/04/1995
Anghiari	1746974,0	4827083,0	327,0	E4	2	PT A Ra Ig	17/02/1993
Pieve S. Stefano	1749938,0	4839585,0	744,0	E4	1	PT A Ra Ig	17/02/1993
Sestino	1763769,0	4849306,0	1000,0	E4	2	PT A Ra Ig	20/09/2002
Buonconvento	1698438,0	4773716,0	190,0	F1	2	PT A Ra Ig	02/12/1993
Castiglion d'Orcia	1713453,0	4759606,0	646,0	F1	2	PT A Ra Ig	24/11/1993
Montenero	1698947,0	4758038,0	172,0	F1	2	PT A Ra Ig	01/01/1994
Radicofani	1722913,0	4758517,0	577,0	F1	1	PT A Ra Ig	26/11/1993
Ripa d'Orcia	1710714,0	4767612,0	510,0	F1	2	PT Ig	01/07/1995
Vetta Amiata	1714373,8	4752044,5	1667,0	F1	2	PT A B Ra Ev Ig	01/01/1996
Alberese	1665256,0	4724973,0	1,0	F2	1	PT Ra Ig	10/12/1996
Baccinello	1696705,0	4740742,0	384,0	F2	2	PT A Ra Ig	22/11/1993
Braccagni	1670120,0	4757160,0	54,0	F2	1	PT A Ra Ig	24/05/1990
Casotto dei Pescatori	1664882,0	4736912,0	1,0	F2	1	PT A Ra Ig	01/10/1990
Rispecchia	1675586,0	4730186,0	25,0	F2	2	PT A Ra Ig	28/07/1989
Roccatederighi	1668152,0	4765635,0	406,0	F2	1	PT Ra Ig	17/01/1992
Stiacciole	1677900,0	4739483,0	51,0	F2	1	PT Ra Ig	19/02/1993
Argentario	1678444,0	4694880,0	483,0	F3	2	PT A Ra Ig	02/04/1995
Capalbio	1696347,0	4697523,0	11,0	F3	2	PT A Ra Ig	20/06/1989
Orbetello	1681190,0	4699780,0	0,0	F3	1	PT A Ra Ig	22/06/1999
Abbadia S. Salvatore	1717377,8	4751334,7	910,0	F4	2	PT A B Ra Ig	01/01/1996
Piancastagnaio	1723317,0	4744046,0	334,0	F4	2	PT A Ra Ig	27/12/1993
Pitigliano	1717577,0	4723530,0	237,0	F4	2	PT A Ra Ig	06/12/1991
Santa Fiora	1709130,0	4746690,0	829,0	F4	1	PT Ig	31/12/1994
Semproniano	1712474,0	4734045,0	448,0	F4	2	PT A Ig	19/11/1993

RETE DI PROGETTO – Elenco delle Stazioni di proprietà delle regioni limitrofe

ID STAZIONE	NOME	X_GB	Y_GB	QUOTA	ZONA ALLERTA	TRASMISSIONE	SENSORI	ATTIVAZIONE
TOS39001246	Calamazza	1575937,0	4894201,0	46,0	A1	1	I	01/01/2000
TOS30209600	Lago Paduli	1590706,8	4910100,5	1168,0	A1	1	P	01/10/2004
TOS39001083	S. Giustina	1571466,0	4912470,0	199,0	A1	2	IP	01/01/2007
TOS39001223	Soliera	1584926,0	4894732,0	132,0	A1	2	IP	01/01/2007
TOS30338600	Rifugio Bargetana	1611176,0	4901342,4	1992,0	A3	1	P	01/10/2004
TOS30248000	Bibbiana	1700663,6	4888739,7	791,0	B5	1	P	01/10/2004
TOS30248400	Casaglia	1701759,9	4879082,1	745,0	B5	1	P	01/10/2004
TOS30290100	Cottede	1673821,8	4885882,9	771,0	B5	1	P	01/10/2004
TOS30290300	Firenzuola	1690102,7	4887944,6	430,0	B5	2	P	01/10/2004
TOS30250000	Marradi	1708962,7	4883383,0	321,0	B5	2	IP	01/10/2004
TOS30287700	Monte Faggiola	1699422,5	4890054,7	887,0	B5	2	P	01/10/2004
TOS30290400	Palazzuolo sul Senio	1703473,8	4887213,9	487,0	B5	1	P	01/10/2004
TOS30150800	Pracchia	1652509,0	4879428,0	637,0	B5	2	IP T	01/10/2004
TOS30290700	Treppio	1662966,8	4882234,1	721,0	B5	2	P	01/10/2004
TOS30233300	Badia Tedalda	1752599,3	4841769,4	850,0	E4	2	P	01/10/2004
TOS06006028	Gorgabuia	1746841,2	4829710,8	335,0	E4	1	I	01/01/2000
TOS06006078	Montedoglio	1746482,0	4831109,0	398,0	E4	2	IP T A B Ra Ig	30/06/2008
TOS07000046	Pitigliano	1713149,0	4718550,0	156,0	F4	2	IP	01/01/2000
TOS07000072	Sorano	1723819,0	4730837,0	448,0	F4	2	P T A Ig	01/09/2007

RETE DI PROGETTO – Elenco delle Stazioni tradizionali a memoria locale del Servizio Idrologico Regionale

ID STAZIONE	NOME	X_GB	Y_GB	QUOTA	ZONA ALLERTA	SENSORI	ATTIVAZIONE
TOS10000115	Camaiore_I_Frati	1603805,0	4865652,0	31,0	A2	Pr	01/01/1989
TOS10000062	Massa	1591746,0	4875268,0	65,0	A2	Pr	01/01/1923
TOS10000090	Pietrasanta	1598441,0	4868233,0	22,0	A2	PrTm	01/01/1924
TOS10000250	Isola_Santa	1605286,0	4879983,0	585,0	A3	Pr	01/01/1952
TOS10000290	Polla_dei_Gangheri	1611911,0	4878518,0	300,0	A3	P	01/01/1967
TOS10000245	Puntato	1603671,0	4878457,0	957,0	A3	PrTr	01/01/1994
TOS10000408	Tistino_(Diga)	1641547,0	4882186,0	550,0	A3	Pr	01/01/1994
TOS10000200	Villacollemandina	1610906,0	4890568,0	500,0	A3	PrTm	01/01/1938
TOS10000511	Lucca_(Orto_Botanico)	1621606,0	4855447,0	20,0	A4	PrTr	01/01/1990
TOS10000490	Vinchiana	1622986,0	4863963,0	46,0	A4	Pr	01/01/1965
TOS10001200	Calenzano	1673917,0	4859537,0	67,0	B2	Pr	01/01/1964
TOS10001224	Firenze_Peretola	1676868,0	4852966,0	34,0	B2	P	01/01/1981
TOS10001220	Sesto_Fiorentino	1678038,0	4857557,0	55,0	B2	Pr	01/01/1929
TOS10001281	La_Rugea_II	1667090,0	4855059,0	33,0	B3	PrTr	01/01/1995
TOS10001276	Olmi	1667277,0	4864062,0	110,0	B3	Pr	01/01/1980
TOS10001210	Prato_Galceti	1667224,0	4863892,0	90,0	B3	Pr	01/01/1978
TOS10001580	Pescia	1635592,0	4863132,0	62,0	B4	PrTm	01/01/1921
TOS10001650	Stabbia	1647277,0	4849967,0	38,0	B4	PTm	01/01/1926
TOS10001550	Stiappa	1637157,0	4872548,0	627,0	B4	Pr	01/01/1926
TOS10000530	Asciano_Pisano	1618586,0	4845247,0	50,0	C1	Pr	01/01/1951
TOS10001990	Casacce	1622046,0	4811206,0	50,0	C1	PrTm	01/01/1949
TOS10001959	Livorno_Scuola	1606889,0	4822002,0	3,0	C1	PrTr	01/01/1995
TOS10001930	Parrana_S-Martino	1616516,0	4821477,0	131,0	C1	PTm	01/01/1948
TOS10000560	Pisa_S-Giusto	1612963,0	4838488,0	3,0	C1	P	01/01/1977
TOS10001970	Quercianella	1610656,0	4812637,0	20,0	C1	Pr	01/01/1921
TOS10002030	Quercioletta	1617216,0	4805136,0	17,0	C1	Pr	01/01/1974
TOS10000550	S-Rossore	1608396,0	4838547,0	4,0	C1	PrTm	01/01/1933
TOS10002050	Vada_(Bonifica)	1618271,0	4798201,0	1,0	C1	Pr	01/01/1930
TOS10002140	Cacciatina	1644357,0	4802151,0	65,0	C2	P	01/01/1939
TOS10002150	Ponteginori	1641526,0	4799180,0	66,0	C2	PrTm	01/01/1938
TOS10002330	Serrazzano_Paese	1647152,0	4786671,0	528,0	C2	Pr	01/01/1975
TOS10002420	Campiglia_Marittima	1631606,0	4768325,0	190,0	C3	Pr	01/01/1980
TOS10002300	Populonia	1621451,0	4760615,0	170,0	C3	Pr	01/01/1951
TOS10002290	S-Carlo_Solvay	1629646,0	4773166,0	350,0	C3	Pr	01/01/1938

ID STAZIONE	NOME	X_GB	Y_GB	QUOTA	ZONA ALLERTA	SENSORI	ATTIVAZIONE
TOS10002282	S-Vincenzo	1625246,0	4773016,0	2,0	C3	Pr	01/01/1934
TOS10002510	Scarlino	1651096,0	4752355,0	229,0	C3	PrTr	01/01/1921
TOS10003240	Monte_Calamit a	1614252,0	4731708,0	413,0	C4	P	01/01/1989
TOS10003200	Patresi_Mortigl iano	1590945,0	4737565,0	120,0	C4	Pr	01/01/1955
TOS10001740	Castelfalfi	1650272,0	4823397,0	272,0	D2	PrTr	01/01/1965
TOS10002010	Castelnuovo_M isericordia	1634786,0	4807636,0	160,0	D2	P	01/01/1949
TOS10001500	Fattoria_Scalett a	1647542,0	4841017,0	20,0	D2	PrTr	01/01/1961
TOS10001720	Laiatico	1639426,0	4814456,0	205,0	D2	Pr	01/01/1953
TOS10002680	Taverne_d'Arbi a	1695963,0	4796241,0	230,0	D3	PTm	01/01/1934
TOS10002640	Vagliagli	1689902,0	4811948,0	511,0	D3	Pr	01/01/1976
TOS10001285	Castellina_in_ Chianti	1684367,0	4816756,0	590,0	D4	Pr	01/01/1986
TOS10001335	Polvereto	1672739,8	4830089,8	320	D4	Pr	31/01/2007
TOS10000681	Chianciano_S- Elena	1729755,0	4770781,0	512,0	E2	Pr	01/01/1983
TOS10000690	Montepulciano	1726468,0	4774765,0	607,0	E2	PrTm	01/01/1925
TOS10000820	Fattoria_Miglia rina	1712728,0	4818641,0	256,0	E3	PTm	01/01/1974
TOS10002860	La_Foce	1726533,0	4766330,0	555,0	F1	PrTm	01/01/1936
TOS10002880	Pienza_(Madon nina)	1718073,0	4772900,0	499,0	F1	PrTr	01/01/1953
TOS10002910	Vivo_d'Orcia	1715578,0	4756815,0	800,0	F1	Pr	01/01/1921
TOS10002580	Acquisti	1668312,0	4746055,0	11,0	F2	PrTm	01/01/1935
TOS10002570	Batignano	1676987,0	4748555,0	163,0	F2	Pr	01/01/1927
TOS10002585	Castiglione_Pe scaia	1656974,0	4735972,0	0,0	F2	Pr	01/01/1997
TOS10002600	Grosseto_Aero nautica	1665863,0	4735255,0	3,0	F2	P	01/01/1980
TOS10002530	Roccastrada	1676747,0	4764190,0	470,0	F2	Pr	01/01/1921
TOS10003000	Talamone	1677187,0	4714509,0	1,0	F2	P	01/01/1951
TOS10003120	Monte_Argenta rio_(Aeron)	1678493,0	4695132,0	580,0	F3	P	01/01/1980
TOS10002810	Radicofani Teleposto	1726214,8	4753066,9	760,0	F4	P	30/12/1999
106020	Guinadi Presa Verde	1567610	4918024	371	A1	Pr	'01/01/1957
107020	Presa Gordana	1565867	4912620	368	A1	Pr	'01/01/1957
110020	Rocchetta	1567585	4908528	426	A1	Pr	'01/01/1935

RETE DI PROGETTO – Elenco delle Stazioni da spostare

ID STAZIONE	NOME	X_GB	Y_GB	QUOTA	ZONA ALLERTA	TRASMISSIONE	SENSORI	ATTIVAZIONE	PROPRIETA'	GESTORE
TOS02000381	Pian di Novello	1635372,0	4885977,0	1142,0	A3	Radio	P	13/06/1996	SERCHIO	SIR
TOS01000925	Marcoiano	1684568,0	4880318,0	540	B1	Radio	P T Ig	22/05/1991	SIR	SIR
TOS01001212	Capalle	1671944,0	4854905,0	41,0	B2	Radio	P T A Ig	08/05/1997	SIR	SIR
TOS01001095	Firenze Genio Civile	1681677,0	4849668,0	50,0	B2	Radio	P	14/11/1991	SIR	SIR
TOS01001249	Cireglio	1648662,0	4872863,0	606,0	B3	Radio	P	16/12/1999	SIR	SIR
TOS01001861	Montecarlo	1633887,0	4857052,0	143,0	B4	Radio	P	08/02/2000	SIR	SIR
TOS01001849	Segromigno Monte	1628006,0	4861357,0	120,0	B4	Radio	P	08/02/2000	SIR	SIR
TOS01001916	Cenaia	1624006,0	4829327,0	19,0	C1	Radio	P T	17/02/2000	SIR	SIR
TOS01001921	Lorenzana	1623996,0	4821417,0	92,0	C1	Radio	P	07/06/2000	SIR	SIR
TOS01001801	Monte Serra	1625136,0	4845297,0	908,0	C1	Radio	P T	19/05/1999	SIR	SIR
TOS01005345	Rosignano I	1616407,1	4806153,2	0,0	C1	Radio	I	27/11/2003	SIR	SIR
TOS01002104	Montecastelli_P	1658845,2	4792010,0	454,0	C2	GPRS+Radio	P T Ig	01/04/2006	SIR	SIR
TOS01002201	Montescud aio	1632334,9	4798443,8	230,0	C2	GPRS+Radio	P T Ig	01/04/2006	SIR	SIR
TOS01002331	Serrazzano	1647842,5	4787119,3	505,0	C2	GPRS+Radio	P T Ig	01/04/2006	SIR	SIR
TOS02000237	Monte Macina	1599559	4881112	1279	A3	Radio	P	08/21/1996	SERCHIO	SIR
TOS02000106	Pedona	1604150	4863396	339.5	A2	Radio	P	11/04/1999	SERCHIO	SIR
TOS02000085	Cerreta S. Nicola	1597508	4871227	155.2	A2	Radio	P	03/28/2001	SERCHIO	SIR
TOS02000228	Alpe S. Pellegrino	1618308	4893860	1470	A3	Radio	P	05/14/1996	SERCHIO	SIR
TOS01002309	Sasso Pisano	1651721.5	4781177.3	470	C3	Radio	P	04/04/2006	SIR	SIR
TOS01001391	Casole d'Elsa	1665622,0	4800786,0	416,0	D1	Radio	P	21/04/2000	SIR	SIR
TOS01001291	S. Donato in Poggio	1680947,0	4822816,0	400,0	D1	Radio	P T	13/09/2000	SIR	SIR
TOS01001781	Casciana Terme	1630731,0	4820382,0	127,0	D2	Radio	P T	09/02/2000	SIR	SIR
TOS01001751	Ghizzano di Peccioli	1644667,0	4822137,0	173,0	D2	Radio	P T	10/02/2000	SIR	SIR
TOS01001521	Marti	1640872,0	4834242,0	120,0	D2	Radio	P	15/03/2000	SIR	SIR
TOS01001	S. Miniato	1647687,0	4838447,0	119,0	D2	Radio	P T Ig	17/12/1999	SIR	SIR

ID STAZIONE	NOME	X_GB	Y_GB	QUOTA	ZONA ALLERTA	TRASMISSIONE	SENSORI	ATTIVAZIONE	PROPRIETA'	GESTORE
491	(Cimitero)									
TOS03005671	Buonconv ento Siap	1701258,0	4778496,0	140,0	D3	Radio	I	24/03/2002	SIR	SIR
TOS01001141	Antella	1687598,0	4844352,0	160,0	D4	Radio	P T	14/03/2000	SIR	SIR
TOS01001115	Lamole	1690341,0	4824250,0	558,0	D4	Radio	P	19/07/1994	SIR	SIR
TOS01001147	S.Colomba no	1671503,0	4849460,0	33,0	D4	Radio	P T A B Ra Ig	07/04/1992	SIR	SIR
TOS01001311	Tenuta del Corno	1673192,0	4832047,0	315,0	D4	Radio	P	01/01/2000	SIR	SIR
TOS01001136	Ugolino	1685101,0	4840817,0	206,0	D4	Radio	P	01/01/2000	SIR	SIR
TOS01000799	Laterina	1719298,0	4820676,0	181,0	E3	Radio	P	25/01/1991	SIR	SIR
TOS03005821	Istia Siap	1679240,0	4738367,0	20,0	F2	Radio	I	24/03/2002	SIR	SIR
TOS03005792	Sasso d'Ombrone Siap	1689451,0	4756021,0	66,0	F2	Radio	I	24/03/2002	SIR	SIR

RETE DI PROGETTO – Elenco delle Stazioni/Sensori in esubero

ID STAZIONE	NOME	X_GB	Y_GB	QUOTA	ZONA ALLERTA	TRASMISIONE	SENSORI	ATTIVAZIONE	PROPRIETA'	GESTORE
TOS11000104	Aulla	1577145,0	4897322,0	68,0	A1	Radio	P T Ig	07/07/1999	ARSIA	ARSIA
TOS11000098	Fivizzano	1585265,0	4897682,0	206,0	A1	Radio	P T A Ra Ig	19/07/2003	ARSIA	ARSIA
TOS11000030	Fosdinovo	1580062,0	4886367,0	254,0	A1	GPRS+Radio	P T A Ig	19/01/2021	ARSIA	ARSIA
TOS09001080	Pontremoli dep.	1570374,0	4913280,0	226,0	A1	GPRS	P T	23/06/2006	SIR	SIR
TOS02000085	Cerreta S.Nicola	1597507,0	4871225,0	144,0	A2	Radio	P	28/03/2001	SERCHIO	SIR
TOS02004085	Padule Massaciucoli	1606946,0	4855817,0	2,0	A2	Radio	I	01/12/1998	SERCHIO	SIR
TOS02000106	Pedona	1604149,0	4863394,0	347,0	A2	Radio	P	04/11/1999	SERCHIO	SIR
TOS02004028	Seravezza I (sensore)	1598146,0	4871713,0	65,0	A2	Radio	I	13/03/1996	SERCHIO	SIR
TOS02000228	Alpe S.Pellegrino	1618307,0	4893858,0	1477,0	A3	Radio	P	14/05/1996	SERCHIO	SIR
TOS11000095	Cutigliano Melo	1638924,0	4888997,0	1172,0	A3	Radio	P T Ig	19/07/1996	ARSIA	ARSIA
TOS02000237	Monte Macina	1599558,0	4881110,0	1308,0	A3	Radio	P	21/08/1996	SERCHIO	SIR
TOS30355400	Passo Radici	1618713,0	4895648,0	1642,0	A3	Radio	P	01/10/2004	Reg EMR	Reg EMR
TOS02000498	Fiano	1614371,0	4865980,0	331,0	A4	Radio	P	12/07/1995	SERCHIO	SIR
TOS11000109	Ponte a Moriano	1622768,0	4860622,0	33,0	A4	Radio	P T A Ig	19/09/1999	ARSIA	ARSIA
TOS02000519	Vorno	1621856,0	4849567,0	85,0	A4	Radio	P	11/07/1995	SERCHIO	SIR
TOS11000514	Lanciafame	1693082,0	4870479,0	214,0	B1	Radio	P T A	26/08/2007	ARSIA	ARSIA
TOS11000111	Firenze Citta'	1682204,0	4848808,0	48,0	B2	Radio	P T A Ig	25/07/2000	ARSIA	ARSIA
TOS18000501	Galceti	1667289,0	4863815,0	76,0	B3	Radio	P T A Ra Ig	07/05/1996	ARSIA	ARSIA
TOS11000510	Prato Citta'	1668650,0	4860670,0	60,0	B3	Radio	P T A Ra Ig	04/06/2004	ARSIA	ARSIA
TOS18000506	Vernio	1672271,6	4878222,3	350,0	B3	Radio	P T A Ra Ig	04/06/2004	ARSIA	ARSIA
TOS11000515	Cerreto Corliano	1649483,0	4844380,0	49,0	B4	Radio	P T A	26/08/2007	ARSIA	ARSIA
TOS11000509	Monsummano	1644883,0	4857895,0	17,0	B4	Radio	P T A Ra Ig	04/06/2004	ARSIA	ARSIA
TOS11000018	Padule	1632541,0	4850871,0	6,0	B4	Radio	P T Ra Ig	19/12/1991	ARSIA	ARSIA
TOS30287500	Barco	1691634,9	4880688,8	780,0	B5	Radio	P	01/10/2004	Reg EMR	Reg EMR

ID STAZIONE	NOME	X_GB	Y_GB	QUOTA	ZONA ALLERTA	TRASMISSIONE	SENSORI	ATTIVAZIONE	PROPRIETA'	GESTORE
TOS11000081	Firenzuola	1689793,0	4885275,0	535,0	B5	Radio	P T Ra Ig	28/07/1995	ARSIA	ARSIA
TOS30290200	Piancaldoli	1694452,7	4897910,5	668,0	B5	Radio	P	01/10/2004	Reg EMR	Reg EMR
TOS11000800	Cenaia paese	1624467,0	4829264,0	19,0	C1	Radio	P T A Ig	25/08/2007	ARSIA	ARSIA
TOS11000110	Pisa Citta'	1612293,0	4840565,0	3,0	C1	Radio	P T Ig	04/07/2000	ARSIA	ARSIA
TOS01005346	Rosignano 2 (sensore)	1616407,4	4806152,6	0,0	C1	Radio	I	27/11/2003	SIR	SIR
TOS03005571	La Cura SP152 Siap	1646976,0	4755688,0	11,0	C3	Radio	I	24/03/2002	SIR	SIR
TOS03002469	Massa Marittima	1653346,0	4767681,0	235,0	C3	Radio	P	01/01/2002	SIR	SIR
TOS11000065	Canneta	1667741,0	4812616,0	152,0	D1	Radio	P T Ra Ig	01/12/1993	ARSIA	ARSIA
TOS11000074	Gambassi	1661189,0	4822540,0	122,0	D1	Radio	P T A Ig	16/12/1993	ARSIA	ARSIA
TOS11000090	Montespertoli Lungagnana	1664388,0	4832169,0	160,0	D1	Radio	P T Ig	05/07/1996	ARSIA	ARSIA
TOS11000066	Poggibonsi Montemorli	1671977,0	4813687,0	199,0	D1	Radio	P T A Ra Ig	30/11/1993	ARSIA	ARSIA
TOS11000072	San Gimignano	1665293,0	4816008,0	217,0	D1	Radio	P T Ra Ig	10/12/1993	ARSIA	ARSIA
TOS11000068	Peccioli	1640937,0	4822556,0	113,0	D2	Radio	P T A Ra Ig	16/11/1996	ARSIA	ARSIA
TOS11000047	Volterra Balze	1648842,0	4809311,0	273,0	D2	Radio	P T A Ra Ig	25/02/1993	ARSIA	ARSIA
TOS03002689	Monteroni d'Arbia	1696788,0	4792261,0	234,0	D3	Radio	P	24/10/2000	SIR	SIR
TOS03002781	Torniella	1674995,0	4770979,0	470,0	D3	Radio	P	01/01/2002	SIR	SIR
TOS11000075	Bagno a Ripoli	1687841,0	4839480,0	240,0	D4	Radio	P T A Ra Ig	17/12/1993	ARSIA	ARSIA
TOS11000088	Poggio Casciano	1687553,0	4840384,0	192,0	D4	Radio	P T A Ig	10/05/1996	ARSIA	ARSIA
TOS11000112	Cesa Collina	1726742,0	4799953,0	268,0	E2	Radio	P T A Ra Ig	20/07/2002	ARSIA	ARSIA
TOS11000084	Cortona S. Lorenzo	1741618,0	4788790,0	260,0	E2	Radio	P T A Ig	07/05/1996	ARSIA	ARSIA
TOS11000085	Montepulciano Scalo	1730696,0	4784199,0	250,0	E2	Radio	P T Ig	07/05/1996	ARSIA	ARSIA
TOS11000517	Il Pero	1721108,0	4822964,0	276,0	E3	GPRS+Radio	P T A	26/08/2007	ARSIA	ARSIA
TOS01000869	Renacci (Fattoria)	1703833,0	4829396,0	209,0	E3	Radio	P	13/02/1991	SIR	SIR

ID STAZIONE	NOME	X_GB	Y_GB	QUOTA	ZONA ALLERTA	TRASMISSIONE	SENSORI	ATTIVAZIONE	PROPRIETA'	GESTORE
TOS11000062	Argiano	1697608,0	4772517,0	338,0	F1	Radio	P T A Ig	18/05/1989	ARSIA	ARSIA
TOS03002845	Gallina	1719476,0	4760530,0	410,0	F1	Radio	P	01/01/2002	SIR	SIR
TOS11000086	Montalcino azienda	1703527,0	4768880,0	487,0	F1	Radio	P T Ig	08/05/1996	ARSIA	ARSIA
TOS11000053	Seggiano	1708117,0	4753269,0	511,0	F1	Radio	P T Ig	18/11/1993	ARSIA	ARSIA
TOS03002949	Cana	1698267,0	4741049,0	484,0	F2	Radio	P	01/01/2002	SIR	SIR
TOS11000007	Albegna	1686676,0	4710584,0	8,0	F3	Radio	P T A Ra Ig	26/06/1989	ARSIA	ARSIA
TOS11000044	Magliano	1690699,0	4720528,0	139,0	F3	Radio	P T A Ig	17/03/1993	ARSIA	ARSIA
TOS11000043	Pomonte	1698698,0	4723516,0	129,0	F3	Radio	P T A Ra Ig	10/04/1993	ARSIA	ARSIA
TOS07000001	Abbadia S.Salvatore	1717732,0	4751148,0	874,0	F4	Radio	P T	01/01/2000	Reg LAZ	Reg LAZ
TOS11000064	Manciano Secchete	1709108,0	4717475,0	309,0	F4	Radio	P T A Ra Ig	01/01/1995	ARSIA	ARSIA

La Dirigente
Dott.ssa Francesca Romana Pittaluga